

Pundit Vision Installation Guide

Pundit Vision Installation Guide provides guidance on the installation process for Pundit Vision.

Please note that the Pundit Vision license is bound to the computer on which it is installed. Transferring the Pundit Vision software on another computer will incur additional costs related to the technical support.

Table of contents:

1	Minimum requirements.....	2
2	Installation	2
2.1	Download Software	2
2.2	Run Installation	3
3	License activation.....	4
3.1	Running Pundit Vision for the first time step-by-step.	4
3.2	User activation key.....	6
3.3	Request key file.....	7
3.4	License file placement.....	7
3.5	Installation validation.....	8

1 Minimum requirements

Computer	PC or Workstation
Operating system	Windows 10 or Windows 11
RAM	8GB
Disc space	2GB

Before installation

All newest firmware and software updates (graphics card drivers, etc.) are installed.

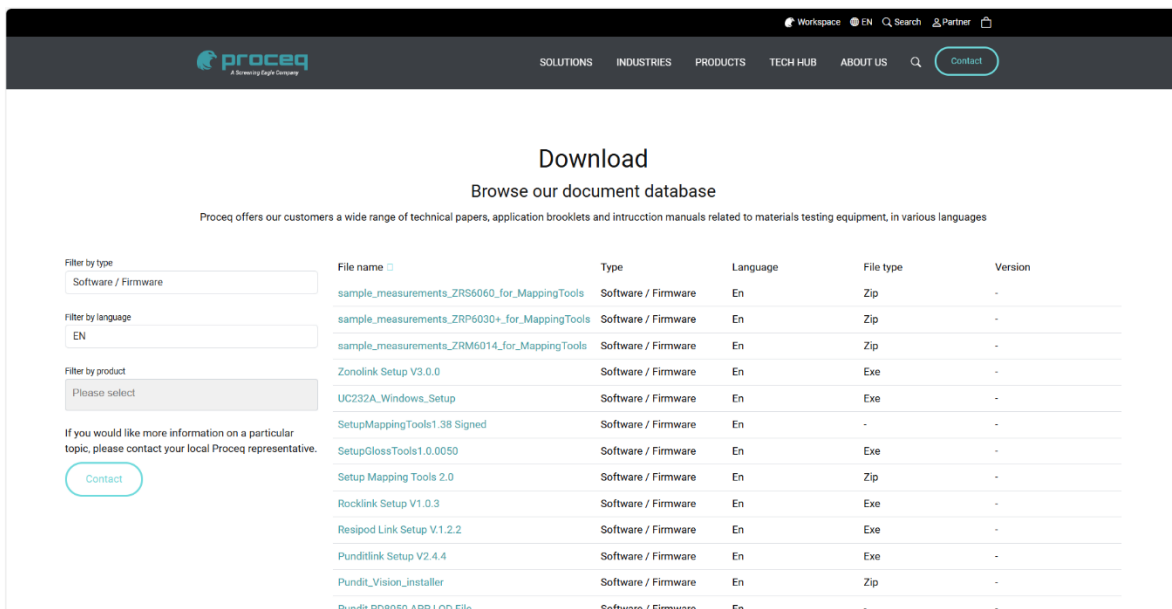
During installation

There is no other third-party software installation ongoing in parallel.

2 Installation

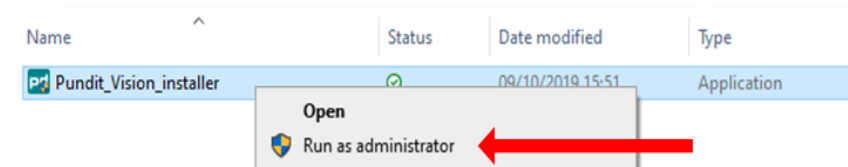
2.1 Download Software

Download the ***Pundit_Vision_installer.exe*** from the Screening Eagle Technologies website:
<https://www.screeningeagle.com/en/download/>



2.2 Run Installation

Locate the installer file (*Pundit_Vision_installer.exe*) on your computer and run it as administrator: to do so, right mouse click on the file, then select *Run as administrator* from the menu.



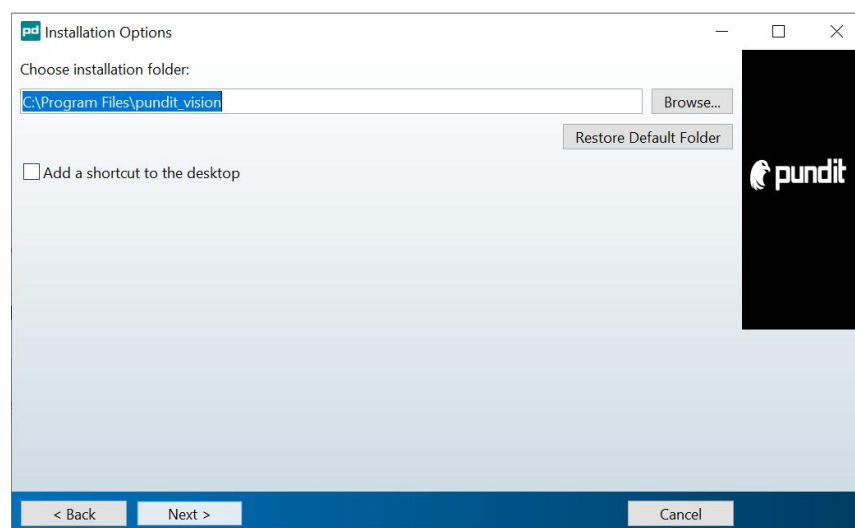
Once the installation starts, follow the instructions on the screen.

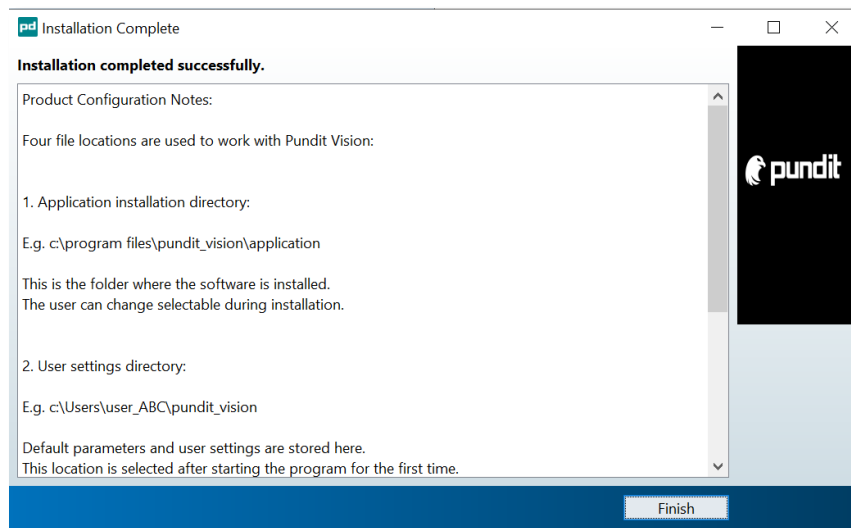
Three folders are generated during installation and first time running the software:

- An **application installation** folder is by default set to the following path **C:\Program Files**
- A **user settings** folder is defined by the user during first-time running the software. This folder must be in a Windows User space (e.g., Documents, or Desktop, etc.) or a path different from **C:\Program Files**
- A **work** folder (or work directory) is also defined by the user. It refers to a folder containing the Pundit instrument data to be analysed with Pundit Vision.

Pundit Vision operates with Matlab Runtime environment. Matlab Runtime is a collection of Matlab libraries requiring more than 1GB space on the disk. Matlab Runtime will be automatically downloaded from the web during the initial installation of Pundit Vision. By default, it is stored under **C:\Program Files\MATLAB\MATLAB_Runtime**.

Matlab Runtime environment can take up to several minutes to download.





3 License activation

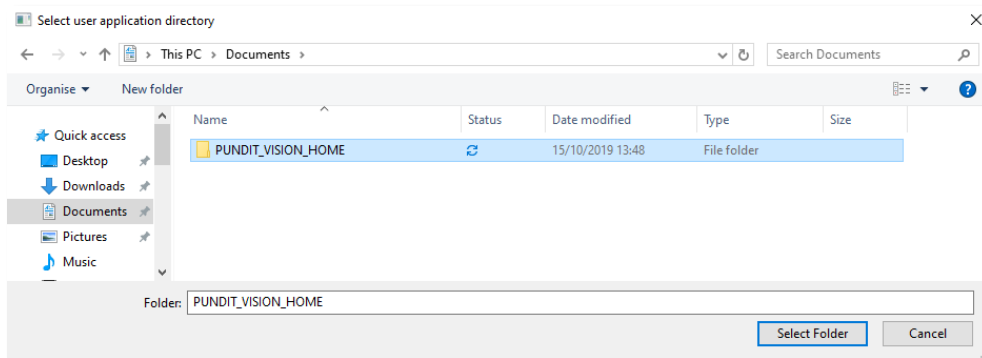
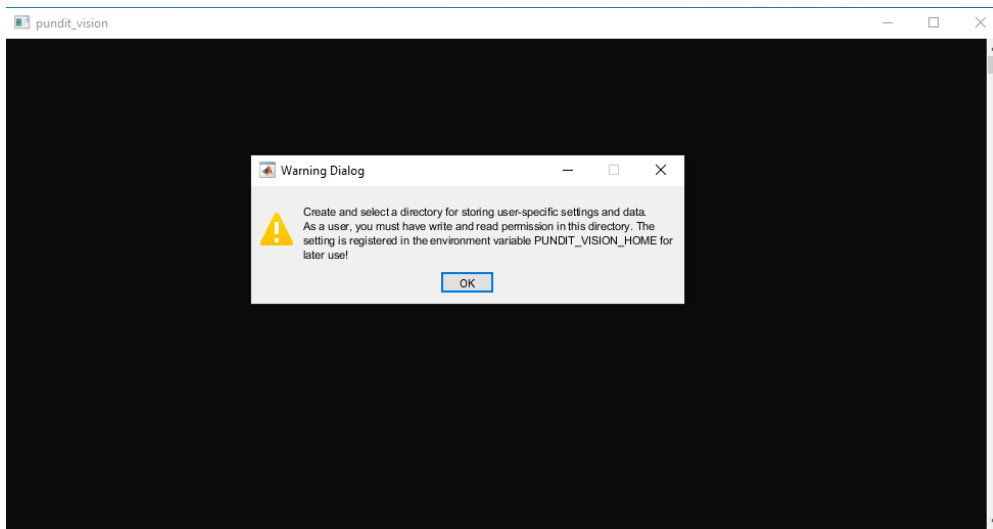
Once installed, Pundit Vision must be activated through the license activation process, detailed in section 3.1. It can be briefly summarized as:

A Proceq representative provides the user with an **activation key**. This activation key allows the user to run limited features of Pundit Vision, namely **request key file**. The **request key file** function collects information from the user's computer such as MAC addresses and hardware and software related codes, which are saved into a file called **register_info.txt**. This file should be sent back to your Proceq representative in order to obtain a **license file**. The license file allows the user to run the software with the licensed features.

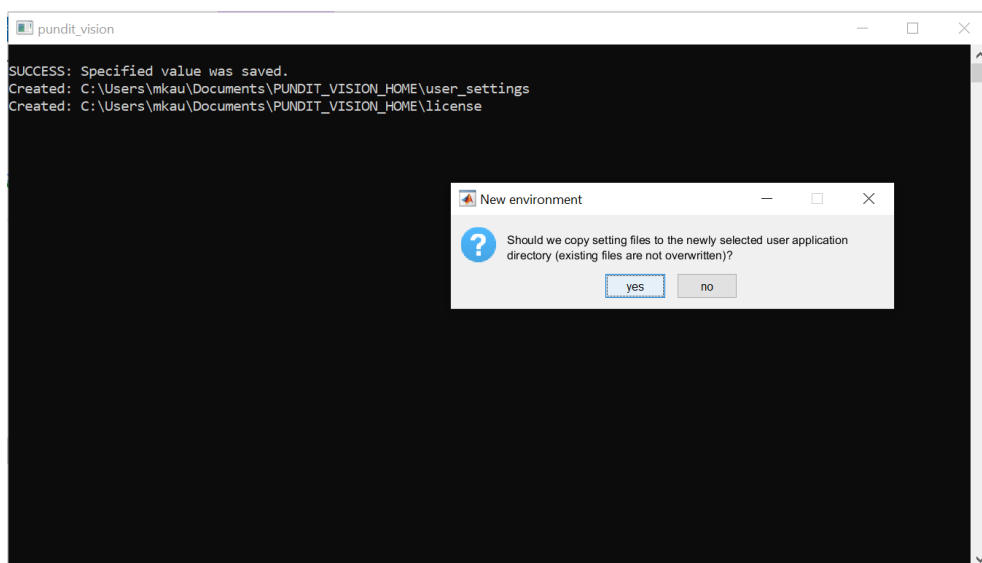
3.1 Running Pundit Vision for the first time step-by-step.

When the software is run for the first time, it requires to choose a folder where user specific settings should be stored.

RECOMMENDATION: It is recommended to call this folder PUNDIT_VISION_HOME

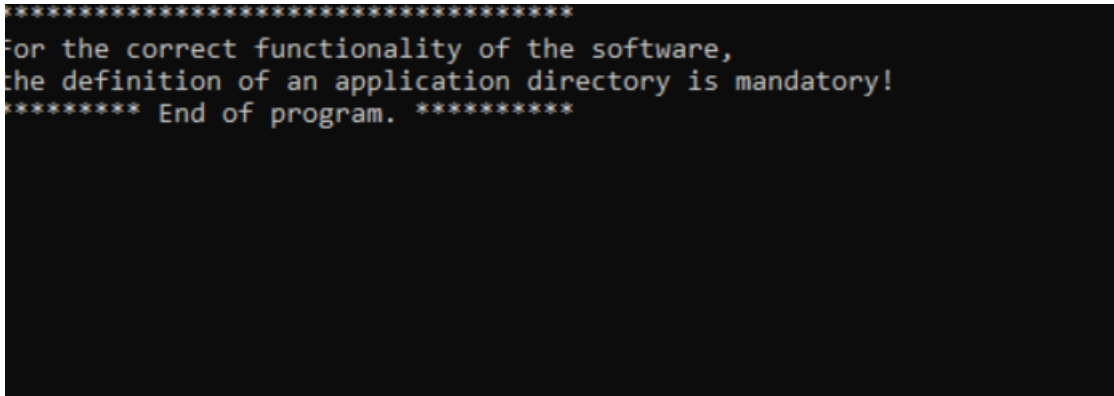


Once the folder is created the following pop-up window will appear, click yes.



3.2 Missing WMIC feature in Windows

It is possible that this message will appear on screen when starting the program following the installation.



This can occur because Microsoft has removed a function from Windows 11:

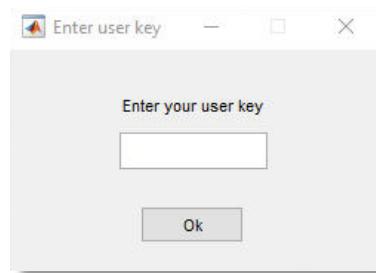
This error comes from missing WMIC feature in Windows (Microsoft decided to uninstall it with one of the updates to Win 11). Please follow instructions from this page to install it

<https://techcommunity.microsoft.com/blog/windows-itpro-blog/how-to-install-wmic-feature-on-demand-on-windows-11/4189530>

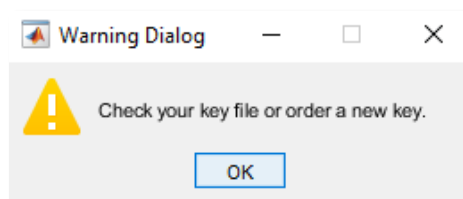
This should solve the problem and enable you to start Pundit Vision correctly.

3.3 User activation key

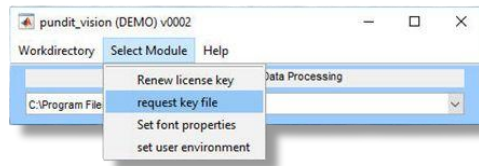
Input the activation key received from your Proceq representative into the pop-up window:



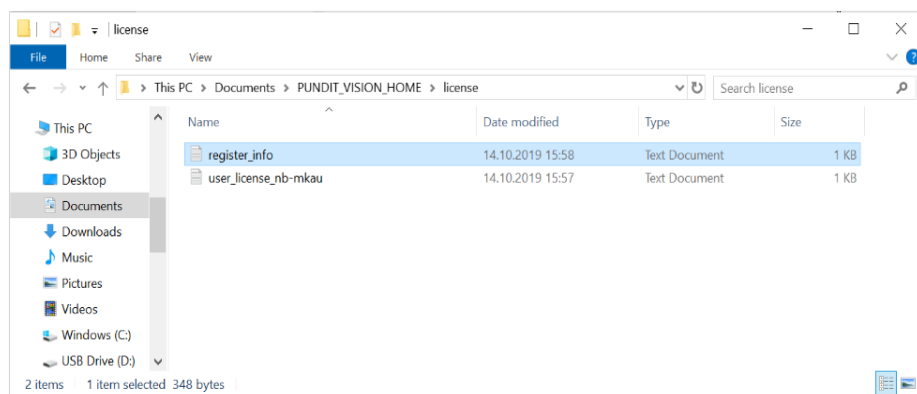
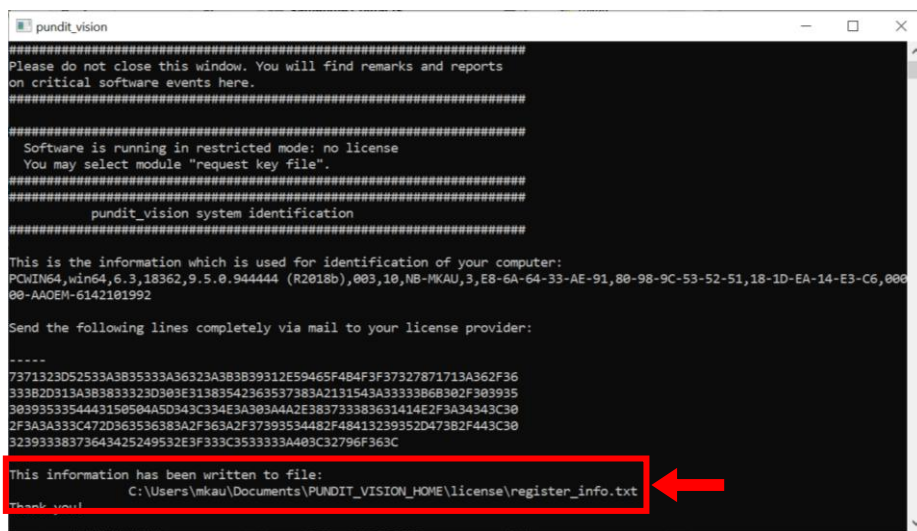
Then the following window will pop-up. Click ok.



3.4 Request key file



The user can locate this file by taking note of the file location information shown on the screen then send this file back to your Proceq representative.



3.5 License file placement

The Proceq representative will provide the user with a **license file** named *reconkey_host_ID*, where *host_ID* is the name of the user's host. The user must then place this file in a subfolder

called *license* of the **user settings** folder (see section 2.2) set at the time of the initial installation (Windows environmental variable PUNDIT_VISION_HOME points to the *user settings* folder).

Name	Status	Date modified	Type	Size
license	✓	15/10/2019 14:40	File folder	
user_settings	✓	15/10/2019 13:59	File folder	

Name	Status	Date modified	Type
reconkey_[host_ID]	✓	15/10/2019 14:22	File
register_info	✓	15/10/2019 14:00	Text Document
user_license_[host_ID]	✓	15/10/2019 13:56	Text Document

For the license file to take effect, the user must restart the Pundit Vision software.

3.6 Installation validation

The installation is successful and the software ready to use if the following drop down menu (may vary depending on licensed features) is visible:

