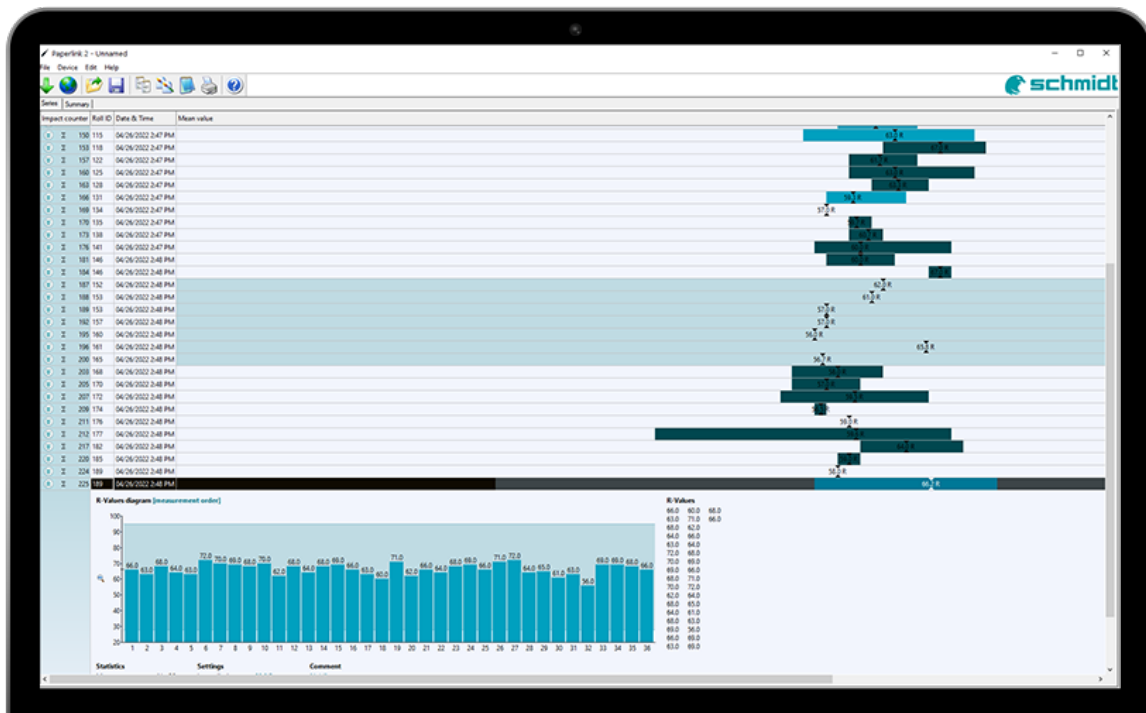


Paperlink 2

Roll Testing Software



Instruction Manual

Document Information

Document Revision: 1.2
Revision Date: -
Document State: Released
Company: Proceq SA
Ringstrasse 2
CH-8603 Schwerzenbach
Switzerland
Classification: Manual

Revision History

Rev	Date	Author, Comments
1.0	Mar 14, 2022	PEGG Initial document
1.1	Mar 31 2022	DBUR, product name updated (PS8000)
1.2	Apr 10, 2022	DBUR, Images update and software name updated, redactional corrections

Content

- 1 Introduction 5**
 - 1.1 Paper Schmidt 5
- 2 Paperlink Software 6**
 - 2.1 Starting Paperlink 2 6
 - 2.1.1 Application settings..... 6
 - 2.1.2 Connecting to the Paper Schmidt..... 6
 - 2.2 Viewing the data 7
 - 2.2.1 Summary window 8
 - 2.3 Adjusting the max/min settings 8
 - 2.4 Adjusting the date and time 9
 - 2.5 Exporting data 9
 - 2.6 Deleting and restoring data 10
 - 2.6.1 Restoring original downloaded data 10
 - 2.6.2 Deleting data stored on the Paper Schmidt 10
 - 2.7 Further Functions 11
 - 2.8 Technical Information Paperlink 2 software..... 11

Legal Notices

This document can be changed at every time and without any prenotification or announcement.

The content of this document is intellectual property of Proceq SA and prohibited to be copied neither in a photomechanical or electronic way, nor in excerpts, saved and/or be passed on to other persons and institutions.

The features described in this instruction manual represent the complete technology of this instrument. These features are either included in the standard delivery or available as options at additional costs.

Illustrations, descriptions as well as the technical specifications conform to the instruction manual at hand at the time of publishing or printing. However, Proceq SA policy is one of continuous product development. All changes resulting from technical progress, modified construction or similar are reserved without obligation for Proceq to update.

Some of the images shown in this instruction manual are of a pre-production model and/or are computer generated; therefore the design/features on the final version of this instrument may differ in various aspects.

The instruction manual has been drafted with the utmost care. Nevertheless, errors cannot be entirely excluded. The manufacturer will not be liable for errors in this instruction manual or for damages resulting from any errors.

The manufacturer will be grateful at any time for suggestions, proposals for improvement and references to errors.

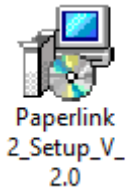
1 Introduction

1.1 Paper Schmidt

The Paper Schmidt PS8000 is a precision instrument designed for testing roll profiles of paper rolls with a high degree of repeatability.

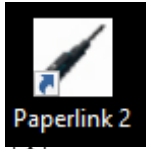
2 Paperlink Software

2.1 Starting Paperlink 2



Download the Paperlink 2 from https://www.screeningeagle.com/en/products/Paper_Schmidt and locate the file “Paperlink2_Setup” on your computer

Follow the instructions you see on the screen. This will install Paperlink 2 on your PC including the necessary USB driver. It will also create a desktop icon for launching the program.

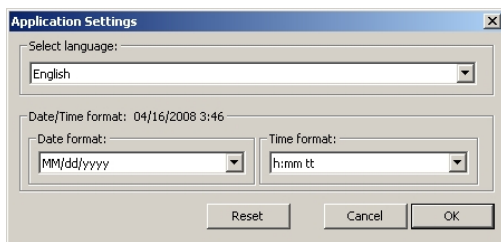


Either click on the desktop icon or click on the Paperlink 2 entry in the “Start” menu. “Start – Programs –Proceq –Paperlink 2”.

Click on the “Help” icon to bring up the complete operating instructions.

2.1.1 Application settings

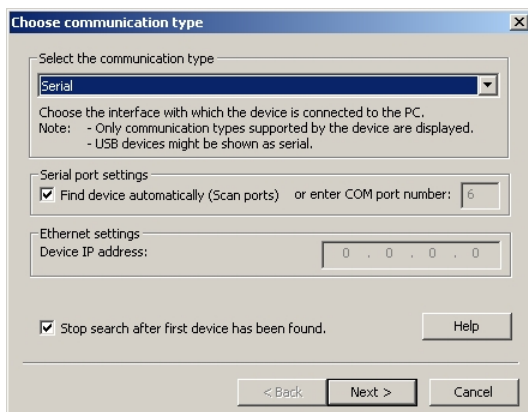
The menu item “File – Application settings” allows the user to select the language and the date and time format to be used.



2.1.2 Connecting to the Paper Schmidt



Connect your Paper Schmidt to a free USB port, then click on the icon to bring up the following window:

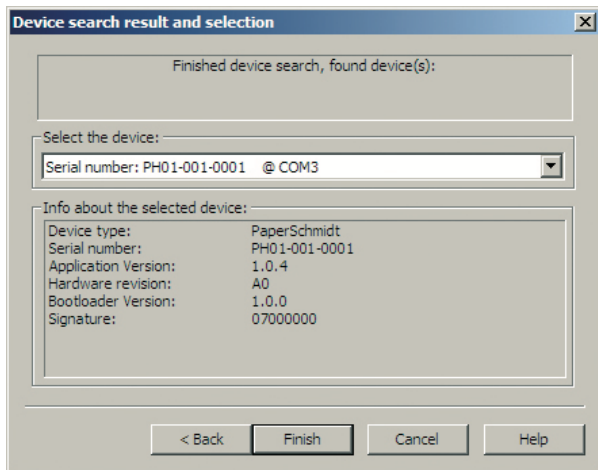


Leave the settings as default or if you know the COM port you can enter it manually.

Click on “Next >”

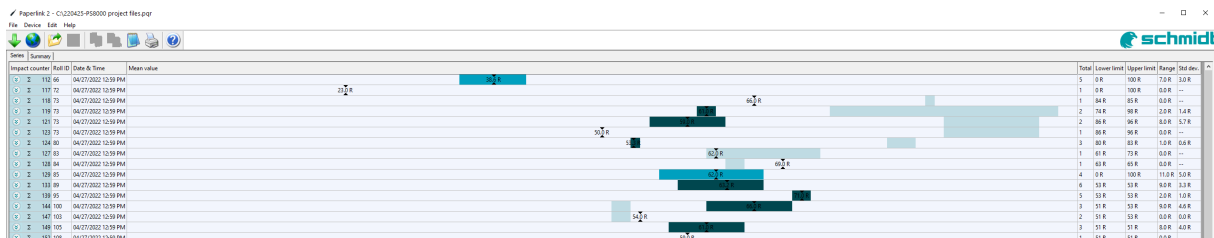
The USB driver installs a virtual com port which is used to communicate with the Paper Schmidt. When a Paper Schmidt has been found you will see a window like this:

Click on the “Finish” button to establish the connection.



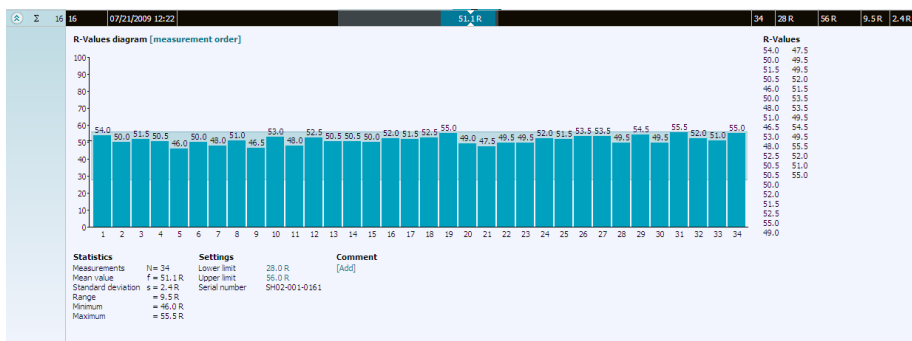
2.2 Viewing the data


The data stored on your Paper Schmidt will be displayed on the screen:




- The test series is identified by the “Impact counter” value and by a “Roll ID” if assigned.
- The user may alter the Roll ID directly in the “Roll ID” column.
- The “Date & Time” when the measurement series was made.
- The “Mean value”.
- The “Total” number of impacts in this series.
- The “Lower limit” and “Upper limit” set for that series.
- The “Range” of the values in this series.
- The “Std dev.” Standard deviation of the measurement series.

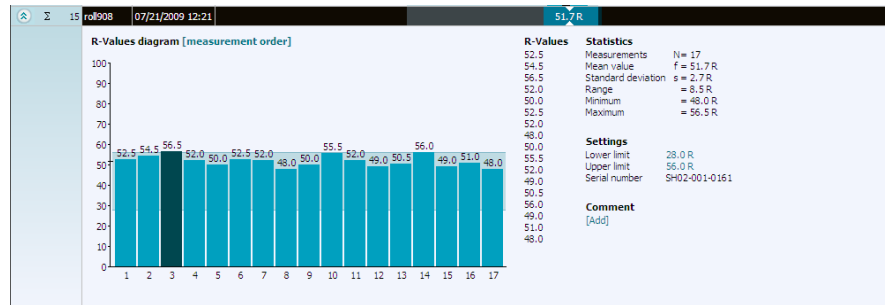
Click on the double arrow icon in the impact counter column to see the profile.



 The user may also add a comment to the measurement series. To do so, click on “Add”.

 The user may alter the order in which the measurements are shown. Click on “measurement order” to switch to “ordered by value”.

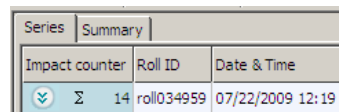
If limits have been set, they are displayed as follows with a blue band. It is also possible to adjust the limits directly in this window by clicking on the blue limit values.




In this example the third reading can be clearly seen to be outside the limits.

2.2.1 Summary window

In addition to the “Series” view described above, Paperlink 2 also provides the user with a “Summary” window. This may be useful when comparing a batch of rolls of the same type.




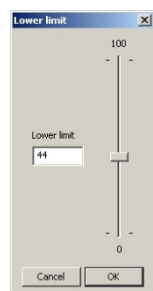
Click on the respective tab to switch between views.

 To include or exclude a series from the summary, click on the summary symbol in the impact counter column. This symbol is either “black” or “greyed out”, which shows whether or not the particular series is included in the summary. The summary view can be adjusted in a similar way to the detailed view of a series.

2.3 Adjusting the max/min settings

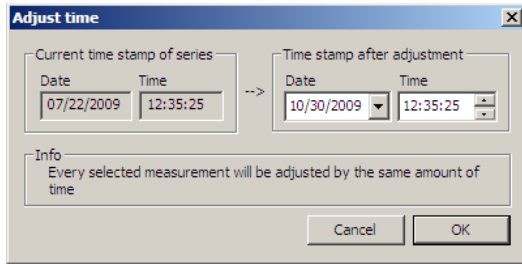
Maximum and Minimum settings that were used in the Paper Schmidt at the time of the measurement series can be adjusted subsequently in Paperlink 2.

 This can be done either by right clicking directly on the item in the appropriate column, or by clicking on the blue setting item in the detailed view of a measurement series.



In each case a selection box will appear with the choice of setting.

2.4 Adjusting the date and time



The time will be adjusted for the selected series only.

2.5 Exporting data

Paperlink 2 allows you to export selected series or the entire project for use in third party programs.

To export selected series, click in the table of the measurement series you wish to export. It will be highlighted as shown.

14	roll034999	07/22/2009 12:19					20	28 R	56 R	6.0 R	1.6 R
15	roll908	07/22/2009 12:22					17	28 R	56 R	8.5 R	2.7 R
16	16	07/22/2009 12:23					34	28 R	56 R	9.5 R	2.4 R
17	17	07/22/2009 12:24					17	28 R	56 R	6.0 R	1.9 R
18	18	07/22/2009 12:26					17	28 R	56 R	9.0 R	2.7 R
21	21	07/22/2009 12:35					16	28 R	56 R	10.0 R	3.2 R
22	22	07/22/2009 12:36					16	28 R	56 R	10.5 R	2.9 R
23	23	07/22/2009 12:36					16	28 R	56 R	37.5 R	8.6 R
24	24	07/22/2009 12:36					16	28 R	56 R	10.0 R	2.5 R
25	25	07/22/2009 12:37					16	28 R	56 R	9.5 R	2.5 R



Click on the “Copy as text” icon.

The data for this measurement series is copied to the clipboard and can be pasted into another program such as Excel. If you wish to export the individual impact values of the series, you have to display them by clicking on the double arrow icon as described above before you “Copy as text”.



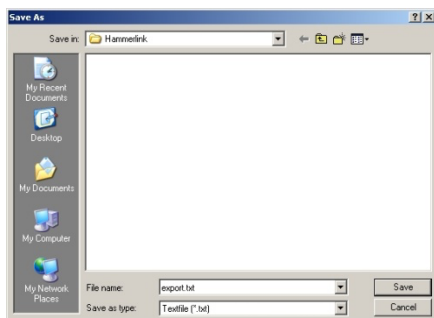
Click on the “Copy as picture” icon

For exporting the selected items only into another document or report. This performs the same action as above, but the data is exported in the form of a picture and not as text data.



Click on the “Export as text” icon

Allows you to export the entire project data as a text file that can then be imported into another program such as Excel. Click on the “Export as text” icon.



This will open the “Save As” window where you can define the location in which you wish to store the *.txt file.

Give the file a name and click on “Save” to save it.



Paperlink 2 has two “tabs” with two display formats. “Series” and “Summary”. When performing this operation, the project data will be exported in the format defined by the active “Tab”, i.e. either in “series” or “summary” format.

To open the file in Excel, locate the file and right click on it and “Open with” – “Microsoft Excel”. The data will be opened in an Excel document for further processing. Or drag and drop the file into an open Excel window.

2.6 Deleting and restoring data

The menu item “Edit – Delete” allows you to delete one or more selected series from the downloaded data.



This does not delete data from the Paper Schmidt, only data in the current project. The menu item “Edit – Select all”, allows the user to select all series in the project for exporting etc.

2.6.1 Restoring original downloaded data

Select the menu item: “File – Restore all original data” to restore the data to the original format as it was downloaded. This is a useful feature if you have been manipulating the data, but wish to go back to the raw data once again.

A warning will be given to say that the original data is about to be restored. Confirm to restore.



Any names or comments that have been added to series will be lost.

2.6.2 Deleting data stored on the Paper Schmidt

Select the menu item “Device – Delete all Data on Device” to delete all data stored on the Paper Schmidt.

A warning will be given to say that the data is about to be deleted on the device. Confirm to delete.




Please note, this will delete every measurement series and cannot be undone. It is not possible to delete individual series.

2.7 Further Functions


The following menu items are available via the icons at the top of the screen:

 *“Upgrade” icon*

Allows you to upgrade your firmware via the Internet or from local files.


 *“Open project” icon*

Allows you to open a previously saved project. It is also possible to drop a *.pqr file onto Paperlink 2 to open it.

 *“Save project” icon*

Allows you to save the current project. (Note this icon is greyed out if you have opened a previously saved project.

“Print” icon

 Allows you to print out the project. You may select in the printer dialog, if you want to print out all of the data or selected readings only.

2.8 Technical Information Paperlink 2 software

System requirements: Windows XP, Windows Vista or newer, USB-Connector

An Internet connection is necessary for automatic updates, if available.

An Internet connection is necessary for firmware updates (using PqUpgrade), if available.

PDF Reader is required to show the “Help Manual”.

SWISS  MADE

For safety and liability information, please check www.screeningeagle.com/en/legal

Subject to change. Copyright © Proceq SA. All rights reserved.

EUROPE

Proceq AG

Ringstrasse 2
8603 Schwerzenbach
Zurich | Switzerland
T +41 43 355 38 00

UK

Screening Eagle UK Limited

Bedford i-lab, Stannard Way
Priory Business Park
MK44 3RZ Bedford
London | United Kingdom
T +44 12 3483 4645

USA, CANADA & CENTRAL AMERICA

Screening Eagle USA Inc.

14205 N Mopac Expressway Suite 533
Austin, TX 78728 | United States

Screening Eagle USA Inc.

117 Corporation Drive
Aliquippa, PA 15001 | United States
T +1 724 512 0330

ASIA-PACIFIC

Proceq Asia Pte Ltd.

1 Fusionopolis Way
Connexis South Tower #20-02
Singapore 138632
T +65 6382 3966

MIDDLE EAST AND AFRICA

Proceq Middle East and Africa

Sharjah Airport International
Free Zone | P.O.Box: 8365
United Arab Emirates
T +971 6 5578505

SOUTH AMERICA

Proceq SAO Equipamentos de Medição Ltda.

Rua Paes Leme 136
Pinheiros, Sao Paulo
SP 05424-010 | Brasil
T +55 11 3083 3889

CHINA

Proceq Trading Shanghai Co., Limited

Room 701, 7th Floor, Golden Block
407-1 Yishan Road, Xuhui District
200032 Shanghai | China
T +86 21 6317 7479