

Download on the
App Store

GP app
version 6.0

Proceq GPRs

AI-powered Auto Tagging

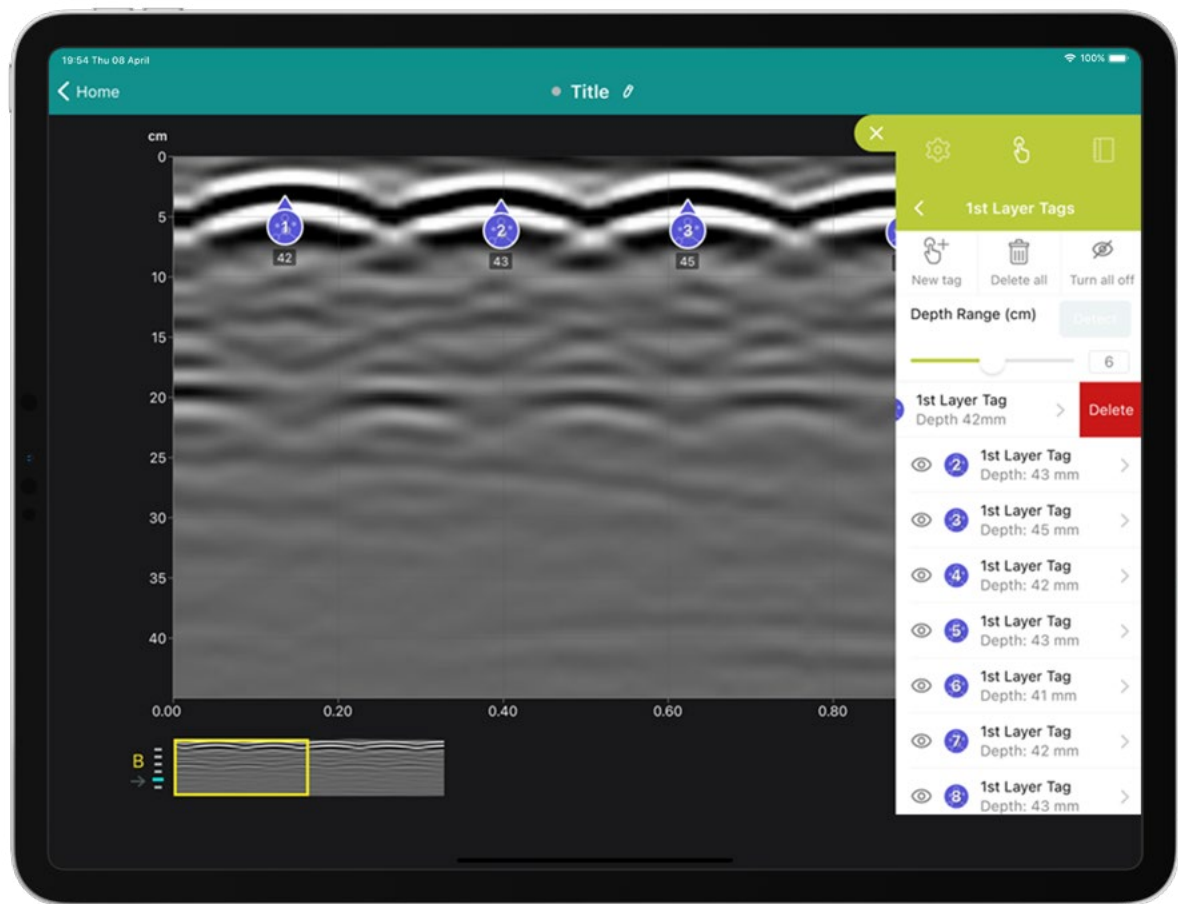
The Industry's First In-field AI Auto Rebar Tagging

- AI Auto Tagging detects hyperbolas to count and tag objects like the first layer of rebars in seconds
- Enable fast, on-the-spot decision making
- Replace hours of manual work with automated results

Revolutionize Your Rebar Inspection Projects

Tagging objects here and there to improve clarity and reporting is simple and quick. However, tagging every hyperbola that appears is unrealistic. Imagine the time it would take to tag every rebar in a concrete structure! It would be valuable information if obtained for cover, spacing, count, layouts, and more, but who has the time to sort through massive datasets on a regular basis.

Introducing the industry’s first AI-powered autotagging for all Proceq GPRs with version 6.0 of the GP app.



The GP app has evolved significantly over the past few versions: Version 4.0 was focused on our compact GPR, the GP8800. Version 5.0 was for our ultra-wideband GPR, the GP8100. Version 6.0 is the beginning of the AI era starting now with AI tags.

This industry-first solution is set to transform how you detect and tag hyperbolas on your concrete scans.

Our advanced AI algorithms can accurately detect and tag most of the hyperbolas from your GPR data in seconds.

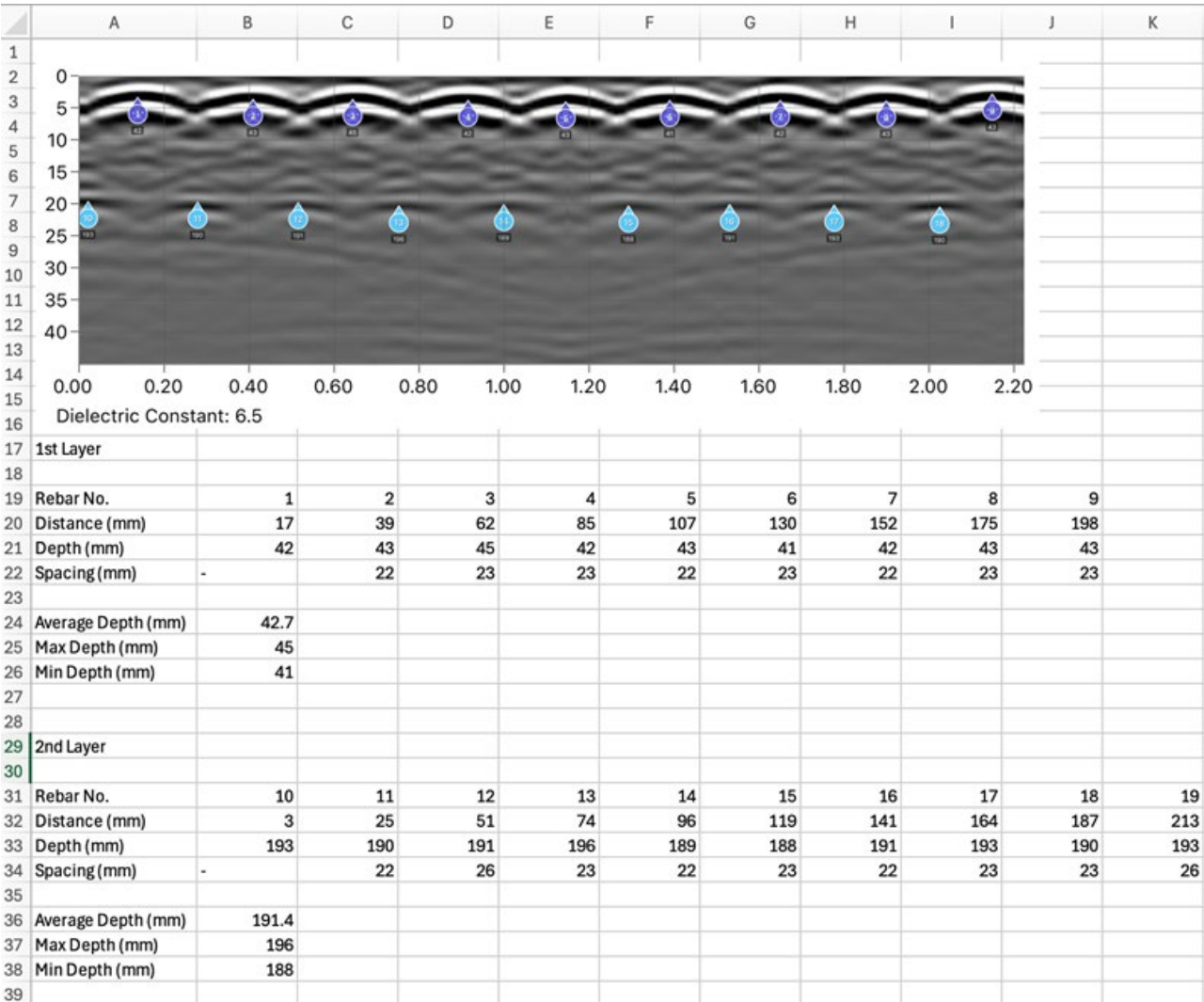
It works by automatically scanning through datasets, identifying hyperbola shapes, locating the corresponding hyperbola peak in the A-scan, and marking with an AI tag. This is the exact procedure you would have done yourself but without the long time and effort required.

THIS IS JUST THE BEGINNING OF AI with a constant evolving model, this opens a new chapter of advanced analysis that we at Proceq look forward to exploring with our users in the future.

The rapid, precise detection, and counting capability enables on-the-spot decisions to be made with confidence, dramatically cutting your overall analysis time and giving you:

- Enhanced Accuracy and Objectivity: The GP app uses advanced algorithms to interpret the GPR signals and identify each hyperbola. This saves countless hours of manual interpretation and tagging. AI tag is a wonderful assistant and most of the work is done by AI. You just have to perform a quick review by adding or deleting a few misplaced tags that may occur.

- Deeper Data Analysis: The AI instantly recognizes most hyperbolas based on the shape. You can then use your own pattern recognition and environmental context to determine the reflecting object. For example, this could enable you to easily visualize the spacing, distance, depth, and concentration of rebar for structural analysis.
- Faster reporting: Dramatically cut your overall reporting time with several fast options to export your data in a few clicks including Excel, DocX, SEGY, HTML, shareable URL, and several other options. With the Excel export option, it automatically separates tags into cells and displays basic information on each one including distance, depth, spacing, and more for each one.



Now you can complete projects faster and gain even more actionable insights from your Proceq GPR scans.

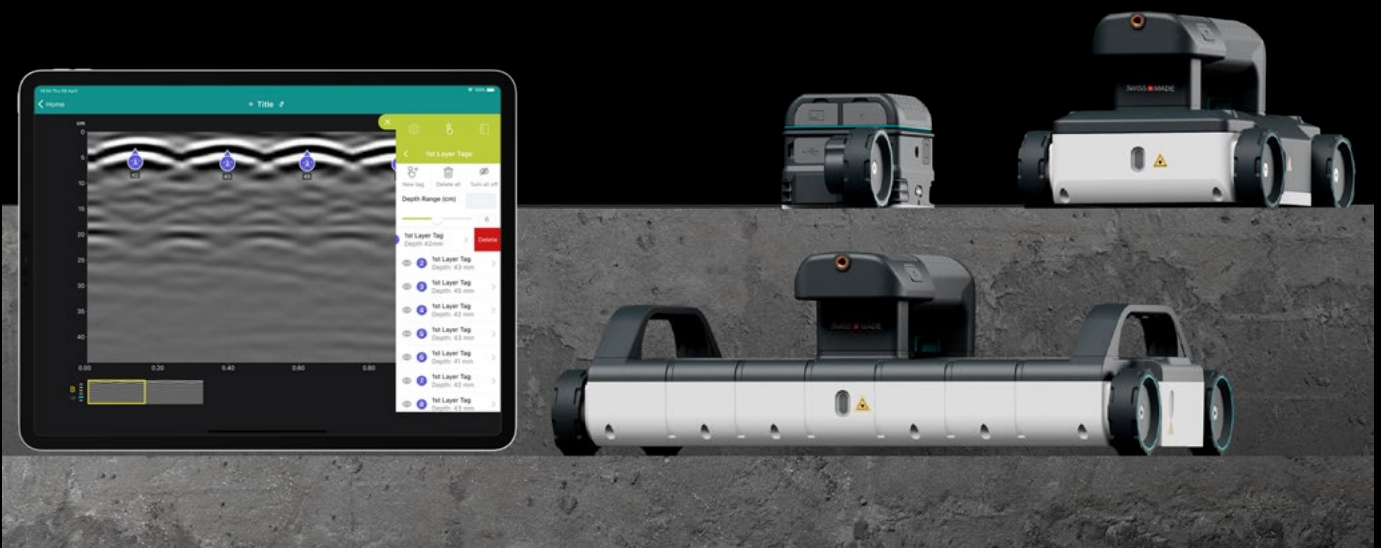
The AI Tag feature is available now with all Proceq GPRs and the GP app version 6.0 at no extra cost to existing or new users!

Download or update your GP app now.



AI Auto Tagging

Available now with all
Proceq GPRs and GP app version 6.0



Available Now

[Browse our GPRs](#)

[Request a demo](#)

