

Ground Penetrating Radars (GPR)

Concrete Scanners

Proceq GP8800, GP8000 & GP8100





See rebar and other hidden objects in concrete with unmatched clarity.





Portfolio

Proceq has been innovating the GPR industry since 2017 with our revolutionary, ultra-wideband concrete scanners for every application.

SWISS  MADE

GP8000

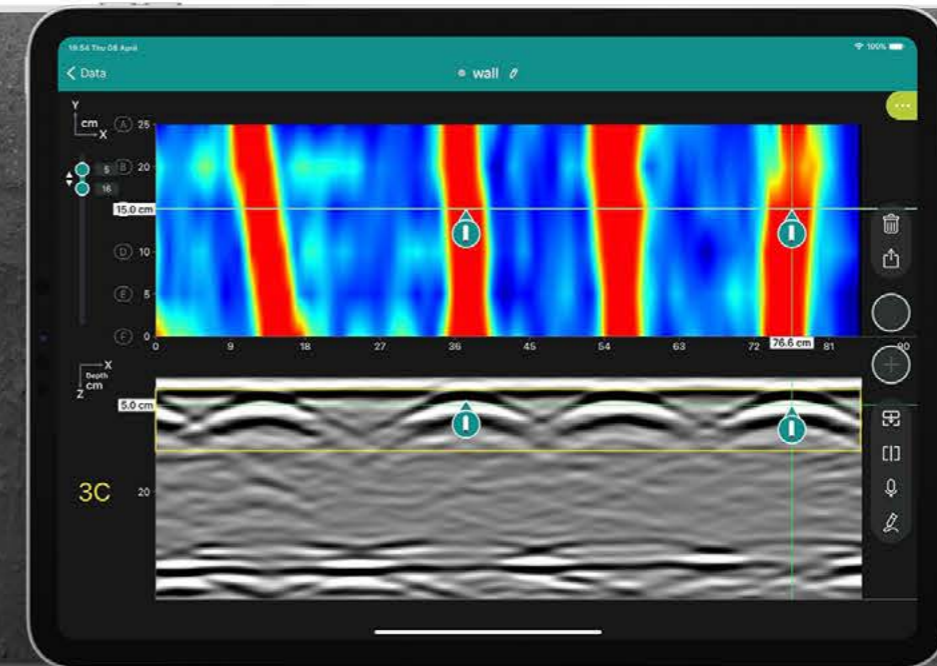
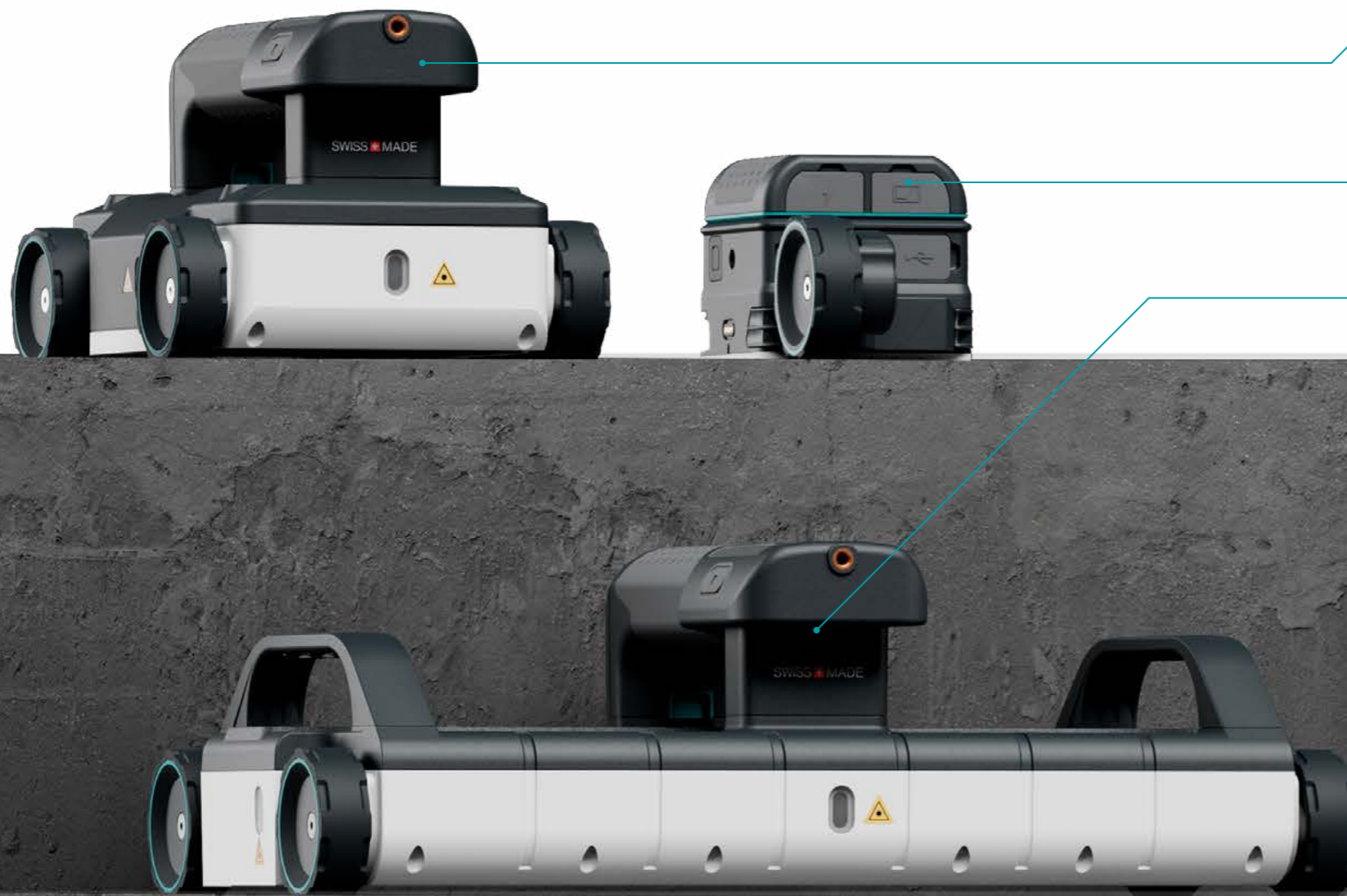
Ideal for tunnels, pavements, wide walls and slabs

GP8800

Ideal for small areas, corners and hard-to-reach spaces

GP8100

Ideal for large areas such as bridge decks and parking slabs

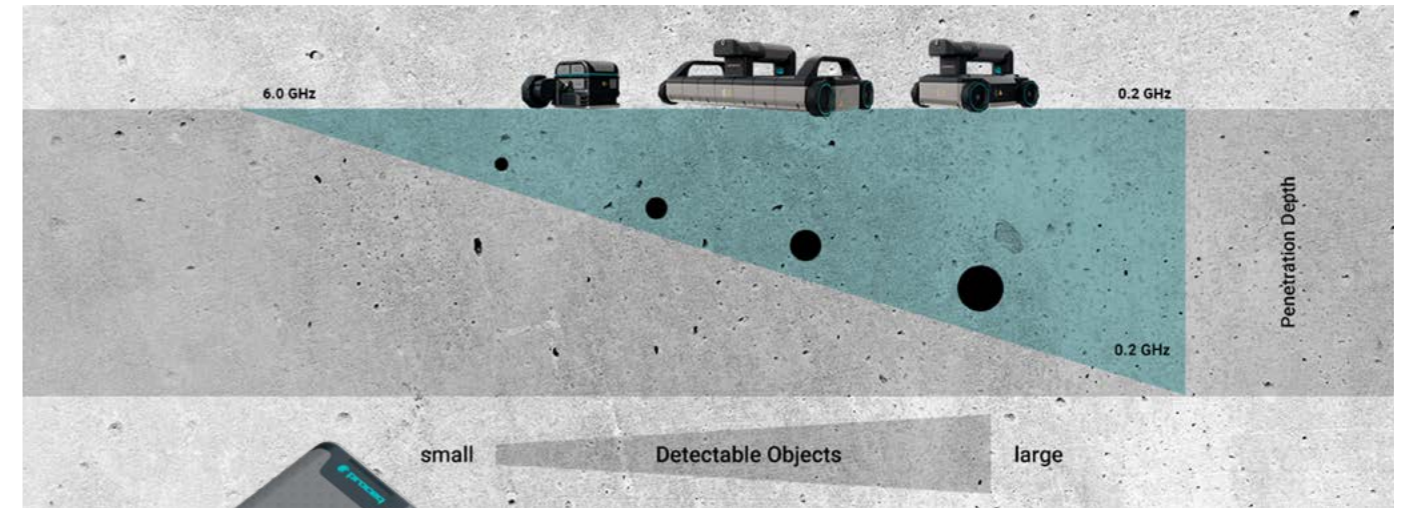




Technology

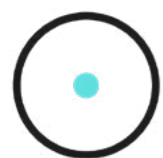
Stepped Frequency Continuous Wave (SFCW) GPR

Proceq introduced the world's first handheld and wireless SFCW GPR for concrete scanning in 2017



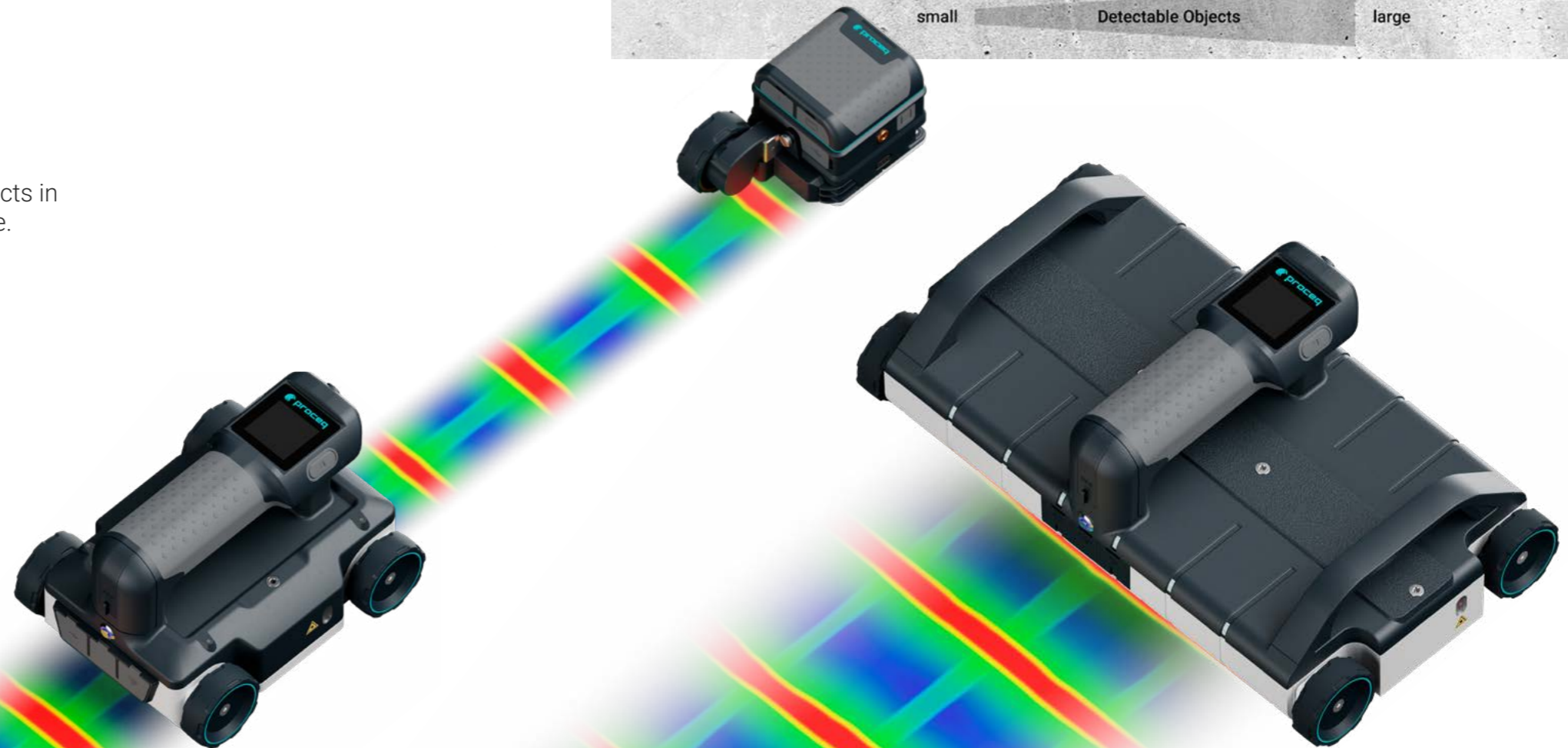
Detect small objects and reach greater depth penetration

Gain a holistic view of shallow and deep objects in one scan with the widest bandwidth available.



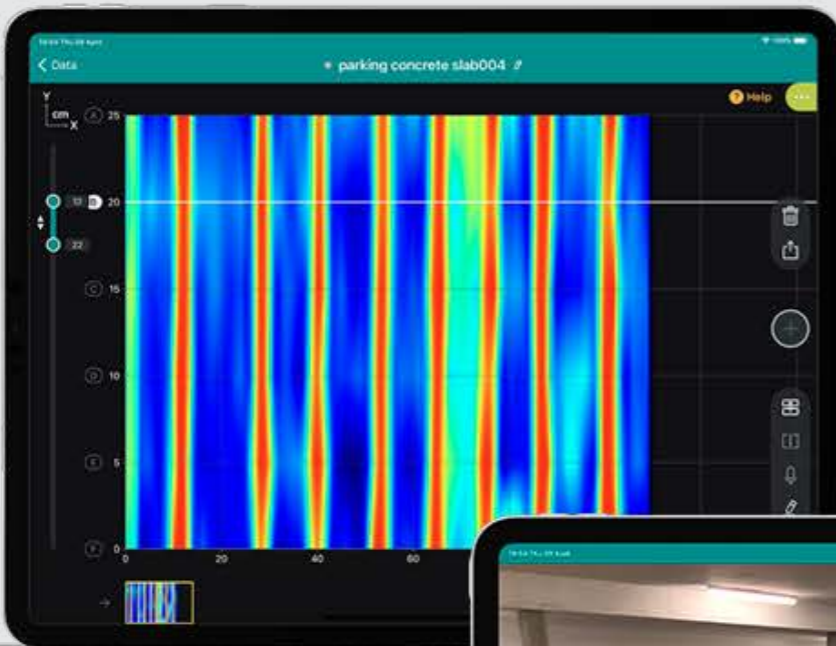
High-performance GPR systems

With optimized antennas tailored to reliably provide unparalleled data quality for concrete imaging across different exploration depths and conditions, saving you countless hours in the field.



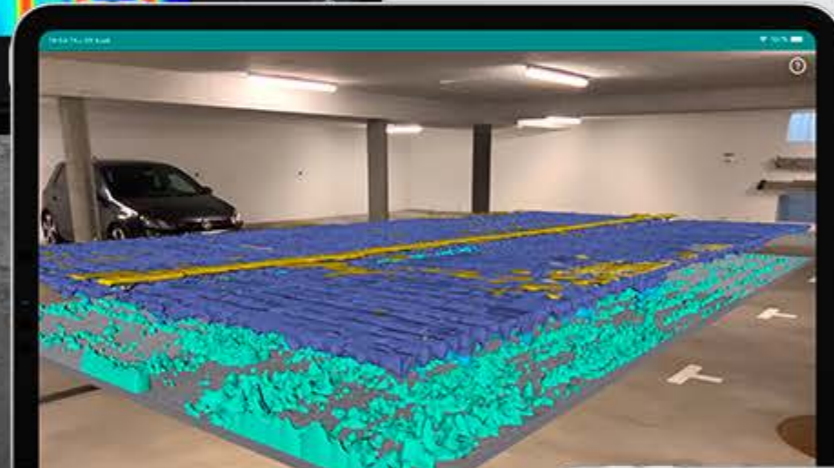


Software

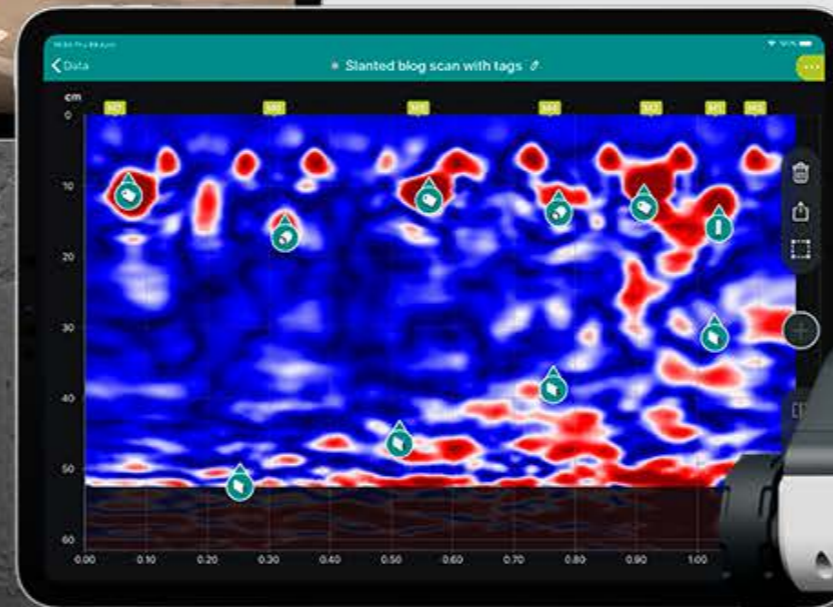
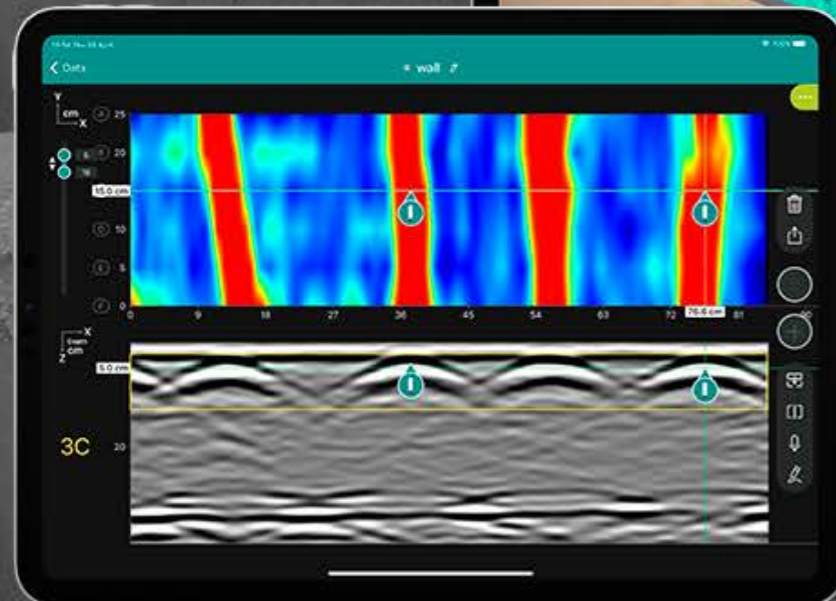


Superline scans deliver clear top-down views of rebar layout

Augmented reality enables superimposing 3D views directly on-site



High-frequency B-scan data views provide unmatched clarity for precise identification of small objects



Real-time migrated views offer intuitive images, making rebar interpretation easier to understand for non-experts



Superior visualization

On-site time-slice, 3D and Augmented Reality views.



Advanced workflows

Easy-to-use app with intuitive gestures and handy features to boost your efficiency in the field.



Instant sharing

Share your field project data and reports with colleagues and clients, anytime, anywhere.

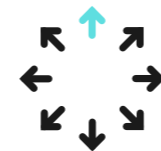




GP8000

See into concrete and pavement up to 1.5 meters / 60 inches

Handheld GPR



Multi-use

Excellent ergonomics to inspect concrete structures with ease and tackle any challenge. Easy scan for vertical and horizontal surfaces.



Powerful

The only handheld sensor that enables you to detect objects and rebar in concrete up to 150 cm!



Productive

Immediate high resolution data visualization in 2D, 3D and AR, with fast report creation and sharing.

Achieve deep penetration through concrete and pavement



GP8000

Overview

Can be wirelessly controlled by an iPad for productive workflow

Center-mounted handle for maximum comfort during long workdays

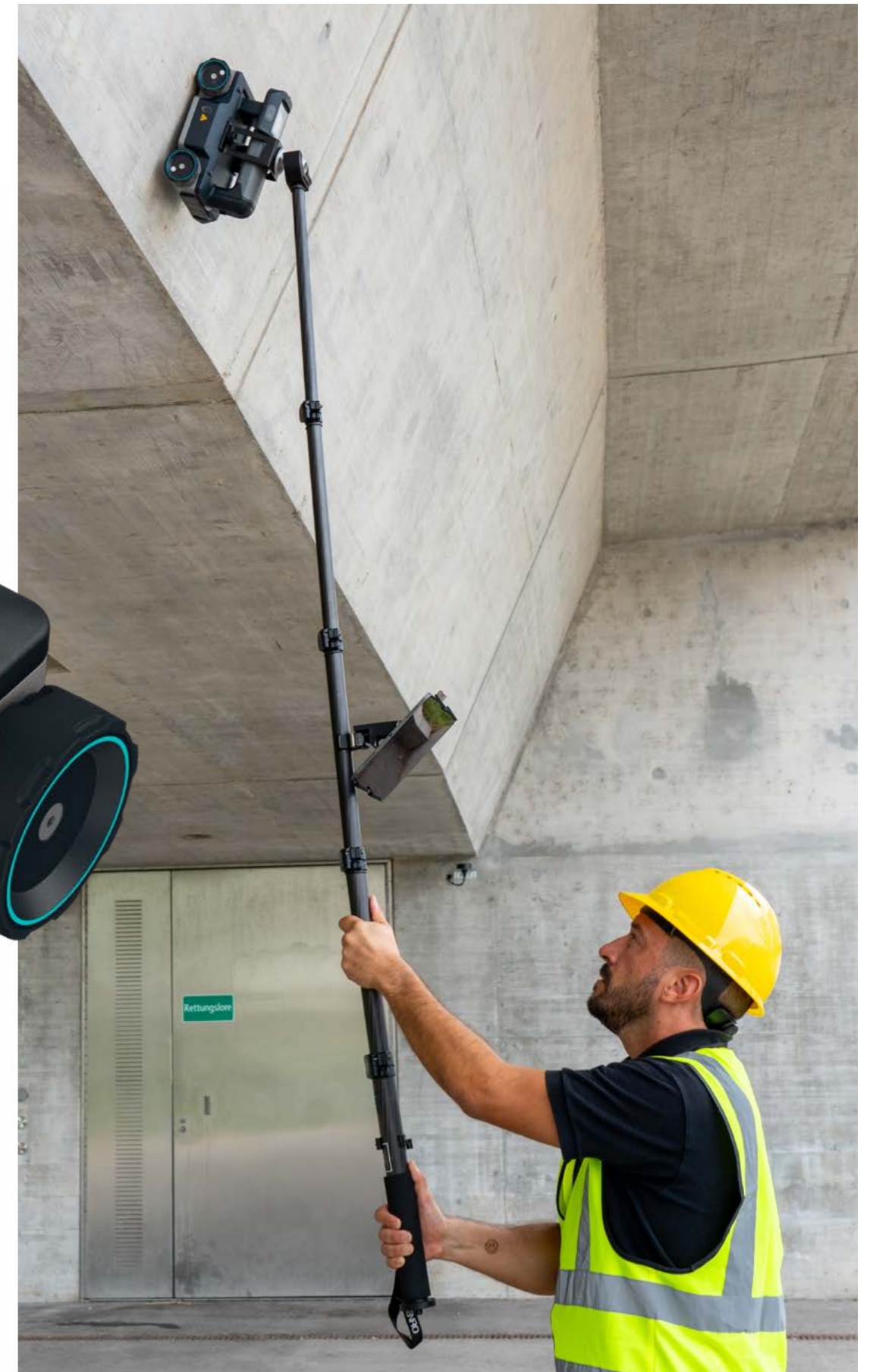
SFCW antenna

Live wire detector

Scan on horizontal or vertical surfaces



Easily reach high ceilings, walls, and beams using the telescopic rod, while viewing your scan in real-time on the tablet.





HW Specs



GP8000



**1.8 kg /
4 lbs**
(including battery pack)

22.1 x 18 x 14 cm
8.7 x 7.1 x 5.5 in

GP8000 HW specs

Radar technology

Stepped-frequency continuous-wave (SFCW) GPR

Modulated frequency range

200 – 4000 MHz

Penetration depth

150 cm / 60 in

Battery

Flight-safe, removable pack, 8x AA (NiMH)

Dimensions

22.1 x 18 x 14 cm
8.7 x 7.1 x 5.5 in

Weight

1.8kg / 4 lbs (including battery pack)

Ground clearance

0.8 cm / 0.32 in

Antennas

1

Antenna distance to edge

8.3 cm / 3.27 in

Special features

All-wheel drive with high-traction wheels

Laser light guidance

Connections

Wi-Fi (802.11n) to display unit

Autonomy

3 h



SW Specs



Proceq GPR App

Measurement modes

- Line Scan
- Area Scan (with Flexible Grid up to 16m2 / 172 ft2)

Review modes

- Line scan (B-scan)
- A-scan (incl. envelope)
- Migrated view
- Non-migrated view
- Time-Slice view
- 3D view
- AR

Advanced visualization

- Time-Slice view Pro
- 3D view
- Augmented Reality (AR)

Reporting

- Workspace integration
- Automatic Logbook
- SEG-Y export
- Instant report generation
- Share via URL

Export formats

- JPG
- PNG
- DOCX
- SEGY
- HTML

Display Unit Specs*

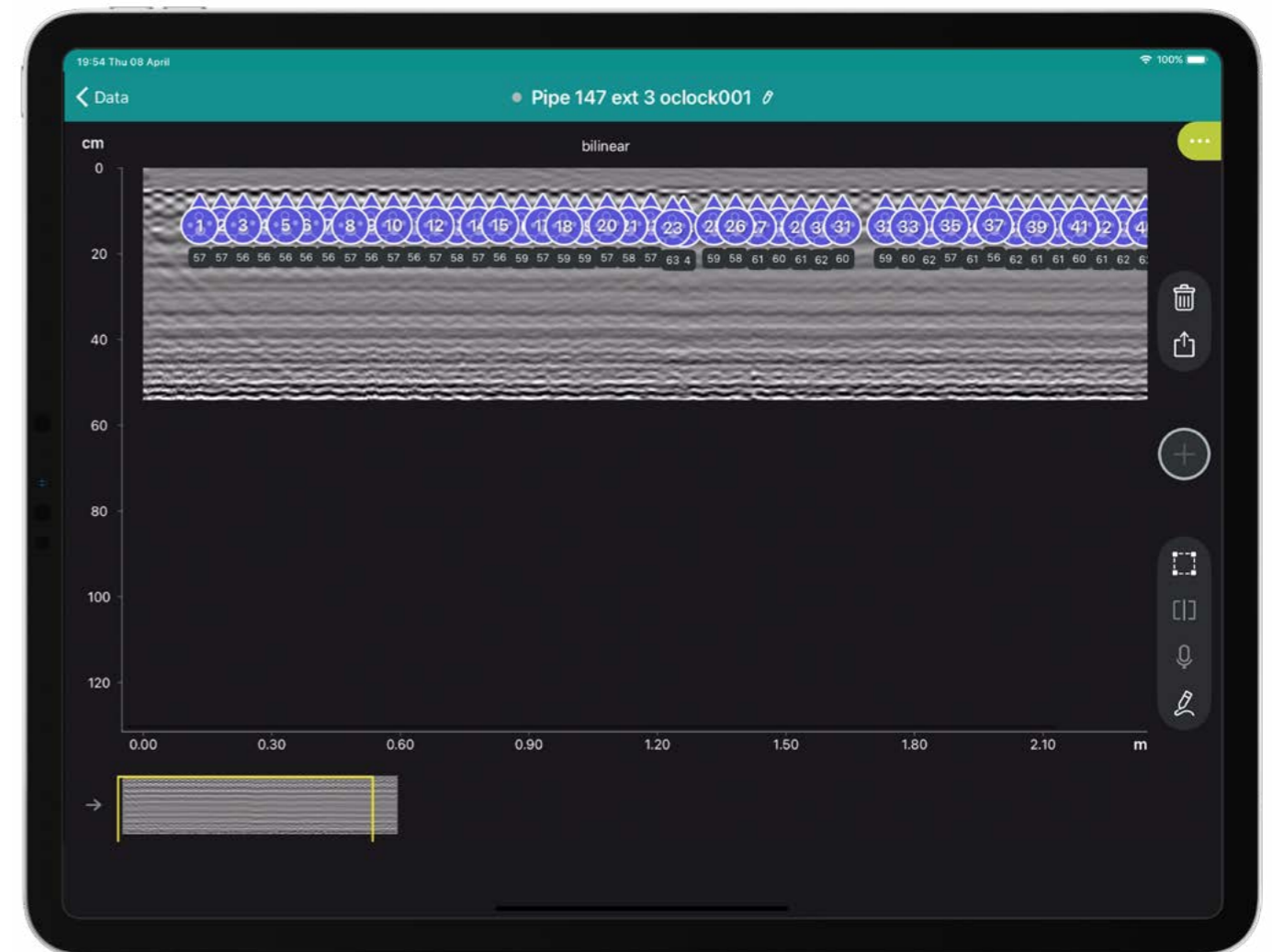
- Latest Apple® iPad recommended (iPad with iOS 13.6 and higher)
- Screen size: From 7.9" to 12.9"
- Resolution: Up to 2732-by-2048
- Memory: Up to 2TB
- Weight: Down to 301 g / 10.6 oz
- Camera: Up to 12MP Wide and 10MP Ultra Wide
- Optional: USB-C, 5G, Face ID

Display Unit Sensors*

- LiDAR Scanner (optional)
- Three-axis gyro
- Accelerometer
- Ambient light sensor
- Barometer
- Built-in GPS/GNSS

Artificial Intelligence (AI) models

- AI Autotagging with automatic Excel reporting



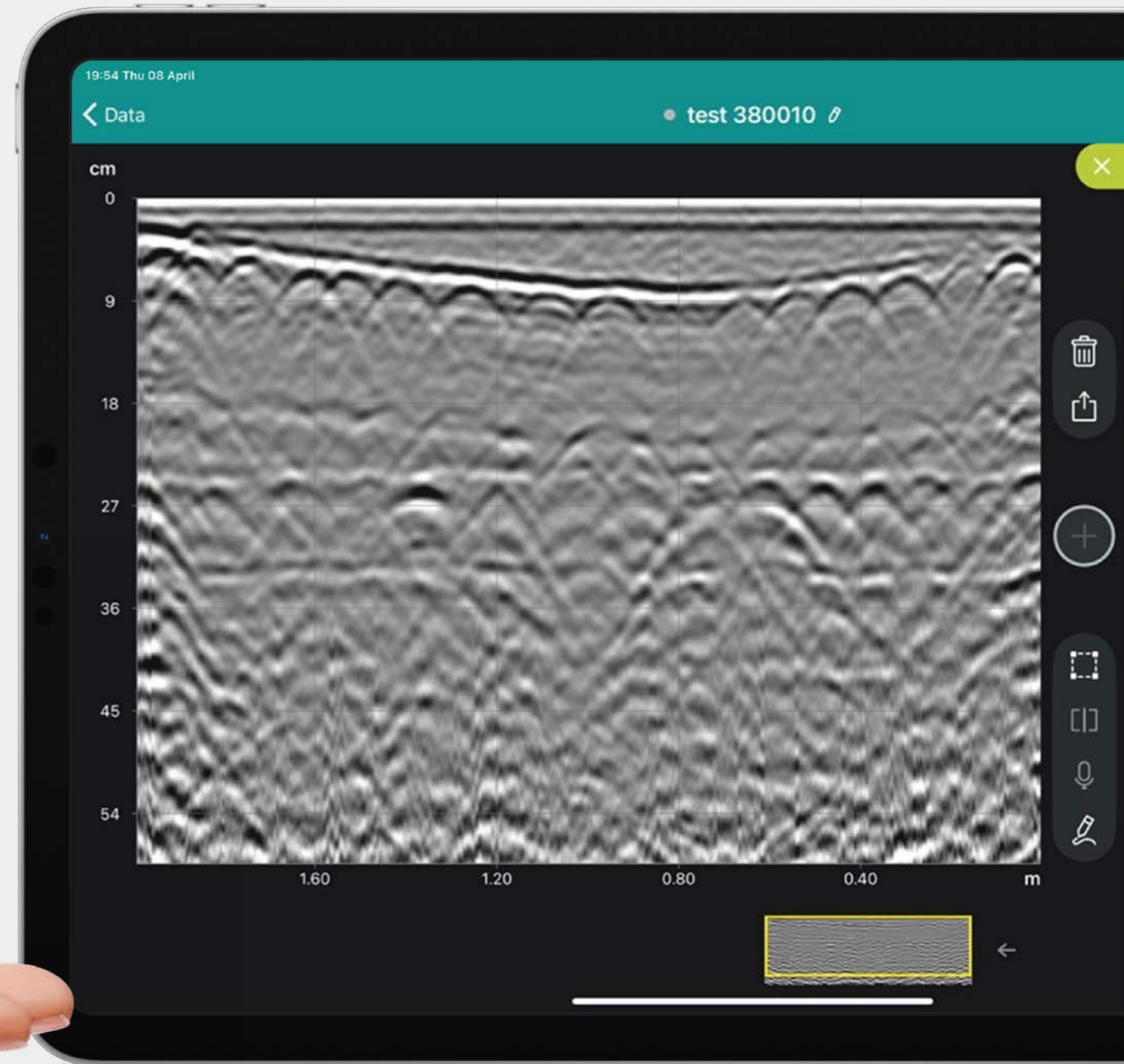
* Depending on iPad model



GP8800

Tiny size, gigantic resolution

Compact GPR

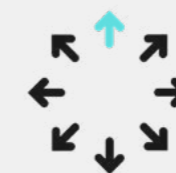


Detect rebar, PT ducts, pipes, and hidden objects in tight spaces with clear scans and cross-polarized imaging.



High-performance

Superior image resolution thanks to unparalleled bandwidth from a palm-size but powerful sensor.



Versatile

Enhanced ergonomics to tackle small and congested areas, curved surfaces and tight corners.



Productive

Fast data acquisition and real-time visualization in 2D, 3D and AR, with fast report creation and sharing.



GP8800

Overview

Scan hard-to-reach spots like edges, round columns, and ceiling pipes — effortlessly with just one hand.

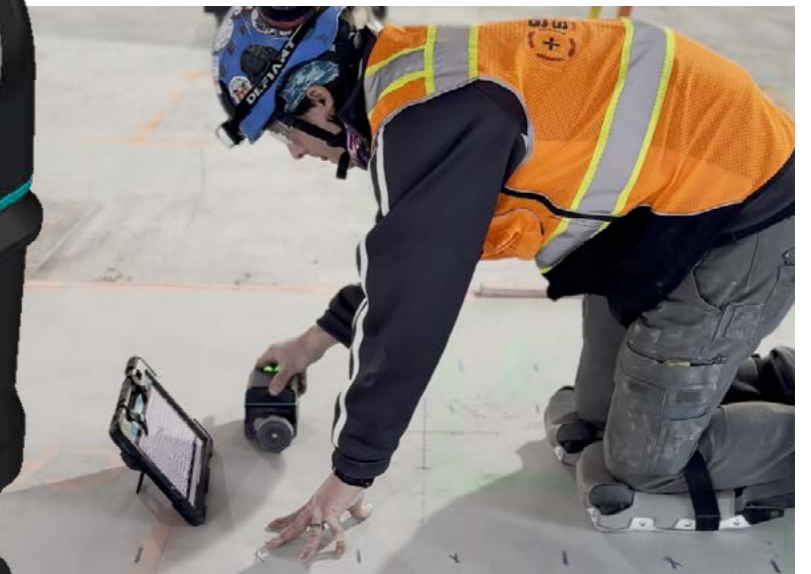
Super compact design for easy transport

Long-lasting, 8-hour rechargeable battery

SFCW antenna

Wirelessly controlled by an iPad with streamlined workflow for maximum productivity

Flexible wheel for cross-polarization and adapting to congested spaces





HW Specs



GP8800

770 g /
27 oz

(including new battery pack)



8.9 x 8.9 x 7.6 cm
3.5 x 3.5 x 3 in

GP8800 HW specs

Radar technology

Stepped-frequency continuous-wave (SFCW) GPR

Modulated frequency range

400 – 6000 MHz

Penetration depth

65 cm / 25.6 in

Battery

1x Removeable Li-ion Battery Pack
2x Removeable Flight-safe, removable pack, 4x AA (NiMH)

Dimensions

8.9 x 8.9 x 7.6 cm
3.5 x 3.5 x 3 in

Weight

770g / 27 oz (Including new battery pack)

Ground clearance

0 cm

Antennas

1

Antenna distance to edge

4.5 cm / 1.77 in

Special features

Wireless wheel, reconfigurable at any time without tools.
Cross-polarization (trailing and side-car configurations)
USB-C tethering to battery pack/power bank

Connections

WiFi (802.11n) and USBC to display unit

Autonomy

8h



SW Specs



Proceq GPR App

Measurement modes

- Line Scan
- Area Scan (with Flexible Grid up to 16m2 / 172 ft2)

Review modes

- Line scan (B-scan)
- A-scan (incl. envelope)
- Migrated view
- Non-migrated view
- Time-Slice view
- 3D view
- AR

Advanced visualization

- Time-Slice view Pro
- 3D view
- Augmented Reality (AR)

Reporting

- Workspace integration
- Automatic Logbook
- SEG-Y export
- Instant report generation
- Share via URL

Export formats

- JPG
- PNG
- DOCX
- SEGY
- HTML

Display Unit Specs*

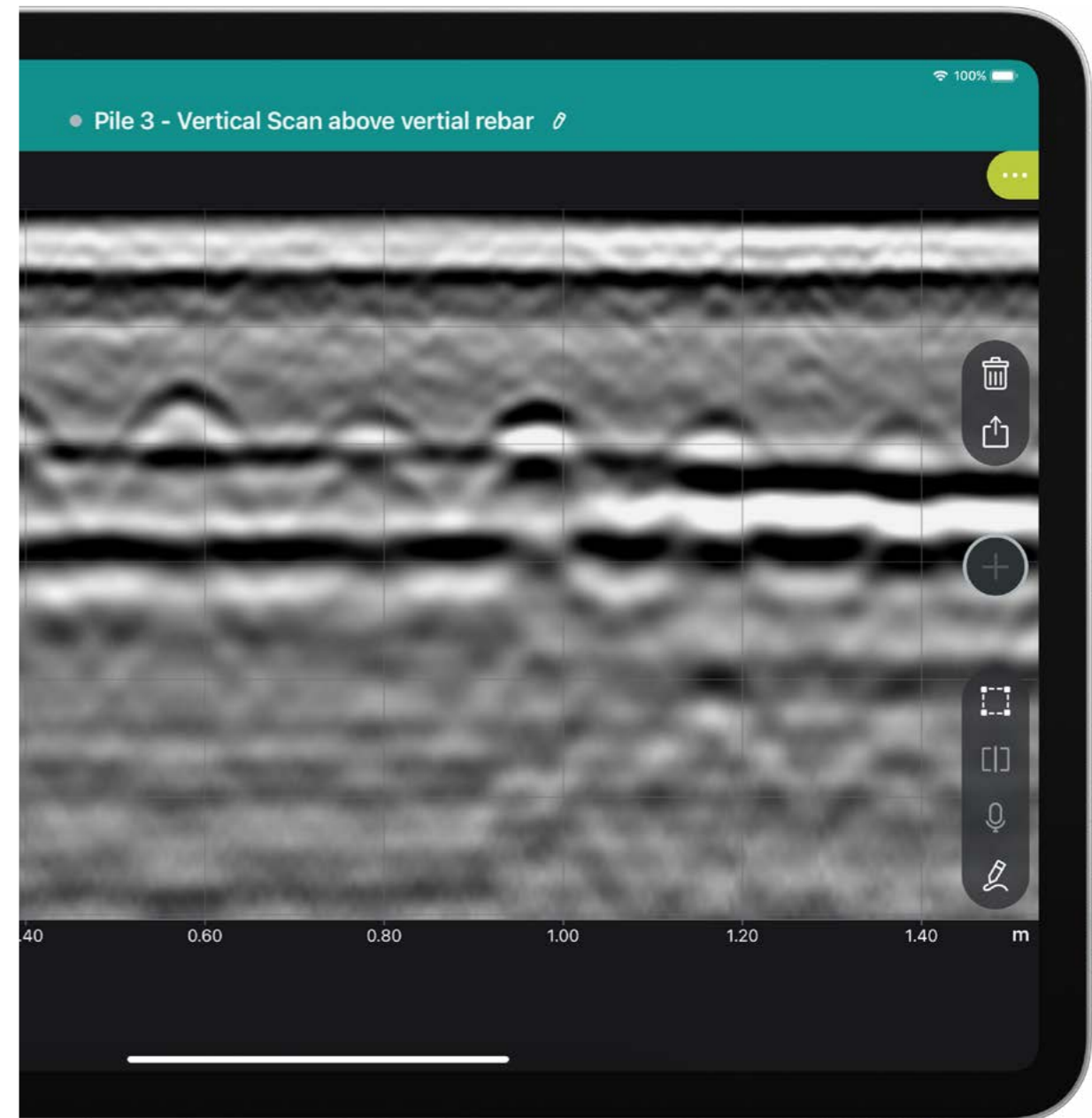
- Latest Apple® iPad recommended (iPad with iOS 13.6 and higher)
- Screen size: From 7.9" to 12.9"
- Resolution: Up to 2732-by-2048
- Memory: Up to 2TB
- Weight: Down to 301 g / 10.6 oz
- Camera: Up to 12MP Wide and 10MP Ultra Wide
- Optional: USB-C, 5G, Face ID

Display Unit Sensors*

- LiDAR Scanner (optional)
- Three-axis gyro
- Accelerometer
- Ambient light sensor
- Barometer
- Built-in GPS/GNSS

Artificial Intelligence (AI) models

- AI Autotagging with automatic Excel reporting



* Depending on iPad model



GP8100

Large area concrete scanner

Handheld MCGPR

Cover wide areas with 6-channel scanning and instantly detect rebar, PT ducts, and pipes in 2D.



Super-productive

Unrivaled scanning efficiency with 25cm effective scan width, 80cm penetration depth and real-time depth slice view.



Accurate

Very dense, built-in, data collection notably improves rebar mapping precision.



Revolutionary

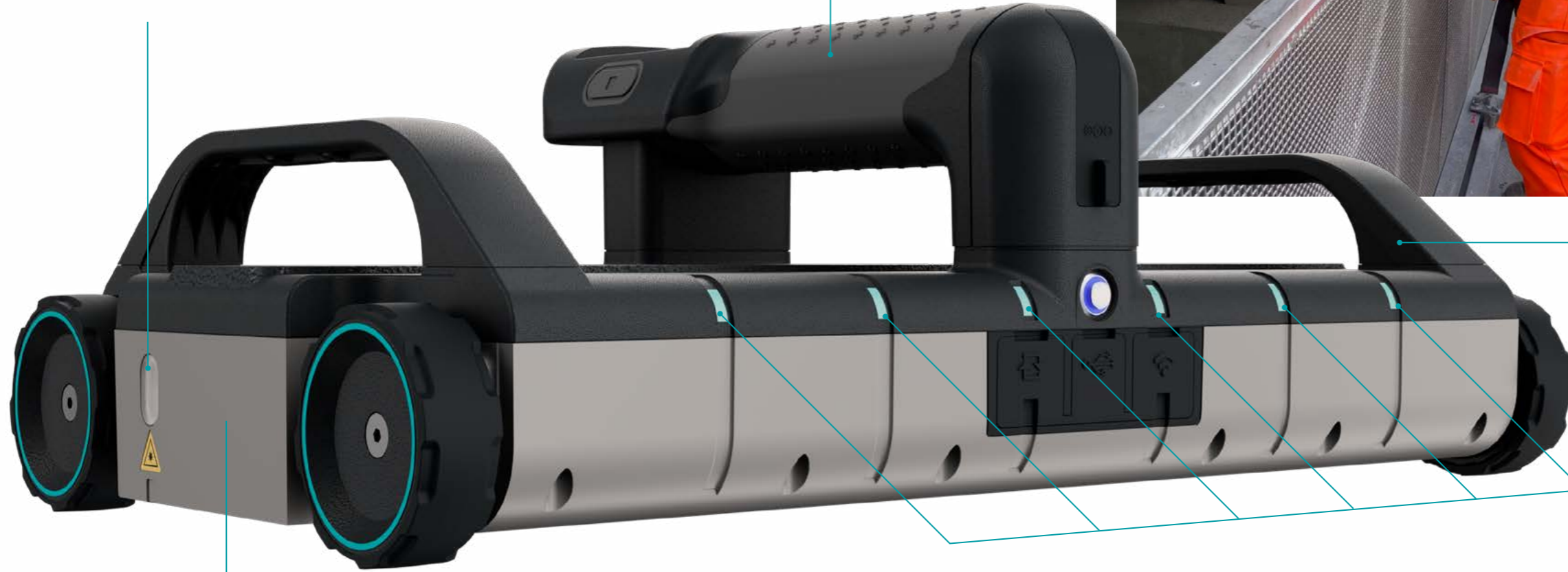
Superline scans provide a unique solution for real-time, 3D concrete imaging, object detection and mapping.





GP8100

Overview



Laser to indicate the scan direction & the measurement center point

Flight safe battery pack for easy travel

SFCW Antenna

Center and side handles for maximum comfort during long workdays

LED for each line in the Superline Scan





HW Specs



GP8100

**3.3 kg /
7.3 lbs**
(including battery pack)



41.5 x 22.5 x 13.2 cm
16.3 x 8.9 x 5.2 in

GP8100 HW specs

Radar technology

Stepped-frequency continuous-wave (SFCW) GPR

Modulated frequency range

400 – 4000 MHz

Speed & resolution

1200 scans/s

Penetration depth

80 cm / 31.5 in

Battery

Flight-safe, removable pack, 8x AA (NiMH)w

Dimensions

41.5 x 22.5 x 13.2 cm
16.3 x 8.9 x 5.2 in

Weight

3.3 kg / 7.3 lbs (Including battery pack)

Ground clearance

0.8 cm / 0.32 in

Antennas

6

Antenna distance to edge

8.3 cm / 3.27 in

Special features

All-wheel drive with high-traction wheels and laser light guidance

USB-C tethering to power bank

Connections

Wi-Fi (802.11n) to display unit

USB-C for Wi-Fi restricted areas

Autonomy

3h (Up to 8 hours with off-the-shelf 10'000 mAh power bank, not included)



SW Specs



Proceq GPR App

Measurement modes

- Line Scan, Superline Scan (1000m / 3281 ft)
- Area Scan (with Flexible Grid up to 100m2 / 1076ft2)*

Review modes

- Superline scan
- Line scan (B-scan),
- A-scan (incl. envelope)
- Migrated view
- Non-migrated view
- Split view
- Time-Slice view
- 3D view
- AR

Advanced visualization

- Time-Slice view Pro
- 3D view
- Augmented Reality (AR)

Reporting

- Workspace integration
- Automatic Logbook
- SEG-Y export
- Instant report generation
- Share via URL

Export formats

- JPG
- PNG
- DOCX
- SEGY
- HTML

Display Unit Specs*

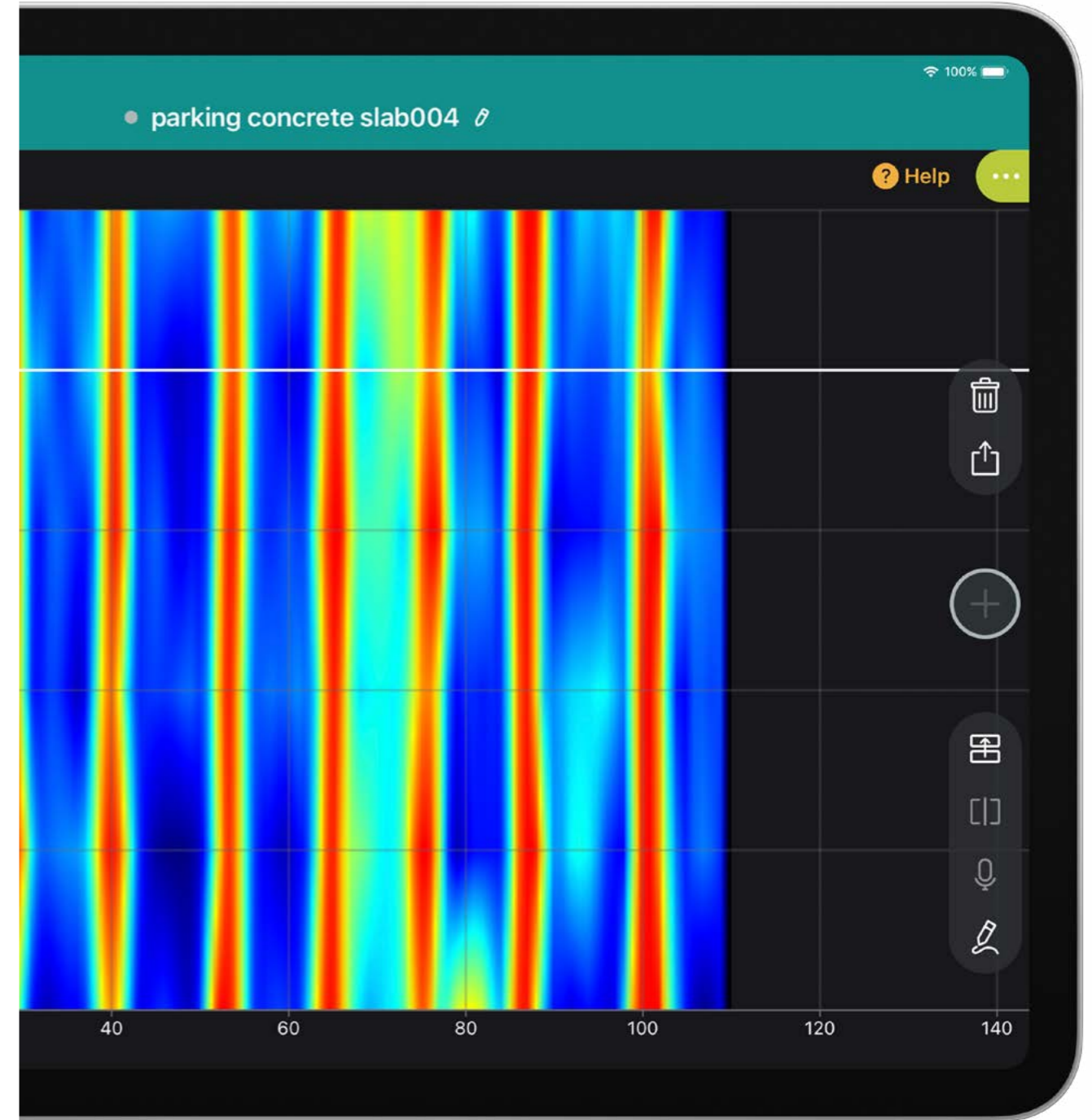
- Latest Apple® iPad recommended (iPad with iOS 13.6 and higher)
- Screen size: From 7.9" to 12.9"
- Resolution: Up to 2732-by-2048
- Memory: Up to 2TB
- Weight: Down to 301 g / 10.6 oz
- Camera: Up to 12MP Wide and 10MP Ultra Wide
- Optional: USB-C, 5G, Face ID

Display Unit Sensors*

- LiDAR Scanner (optional)
- Three-axis gyro
- Accelerometer
- Ambient light sensor
- Barometer
- Built-in GPS/GNSS

Artificial Intelligence (AI) models

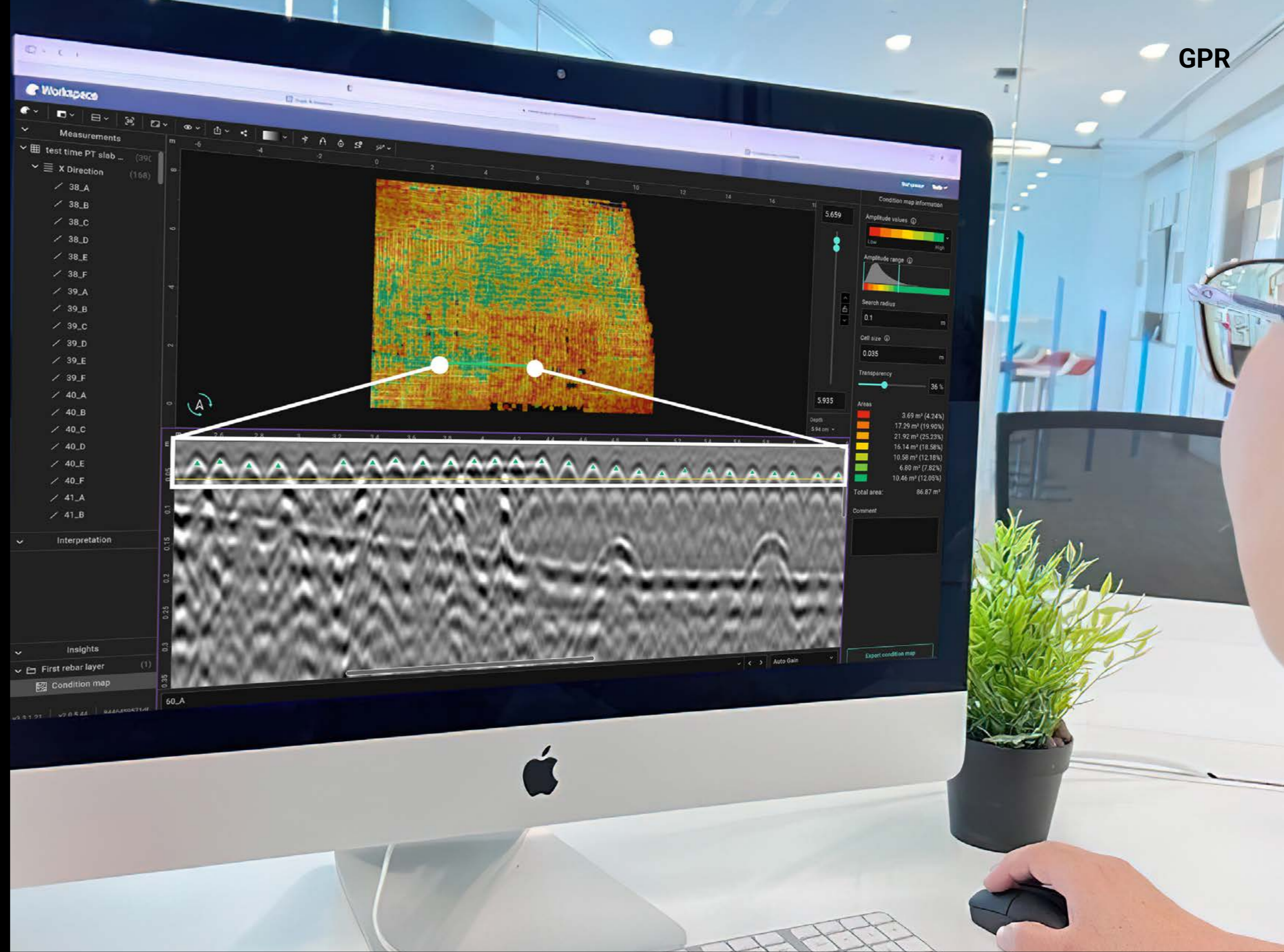
- AI Autotagging with automatic Excel reporting



* Depending on iPad model



GPR



POST-PROCESSING

Software

 GPR Insights



Deliver more

Quick generation of **Deterioration and Moisture Maps** to identify areas with a high likelihood of being deteriorated.



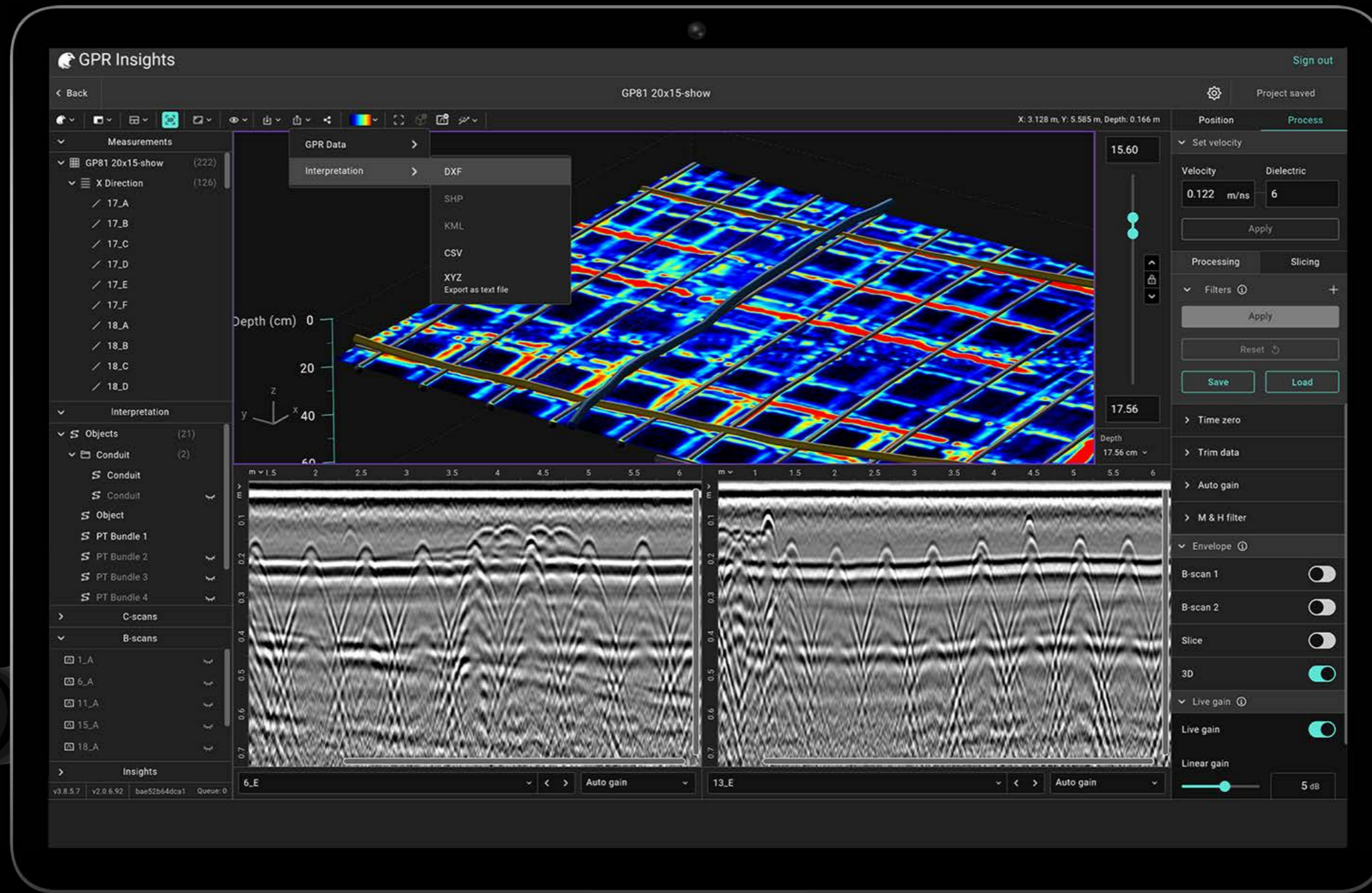
Gain more insights

Organize how to see the data with **advanced 2D and 3D visualization modes** to not miss any detail.



Boost productivity

Save hours of time with **AI-assisted rebar detection** and easy to use filters to analyze raw data.



POST-PROCESSING

Software

 GPR Insights



CAD Export

Export critical structural elements — such as PT ducts and pipes — to DXF format for seamless integration with BIM workflows.

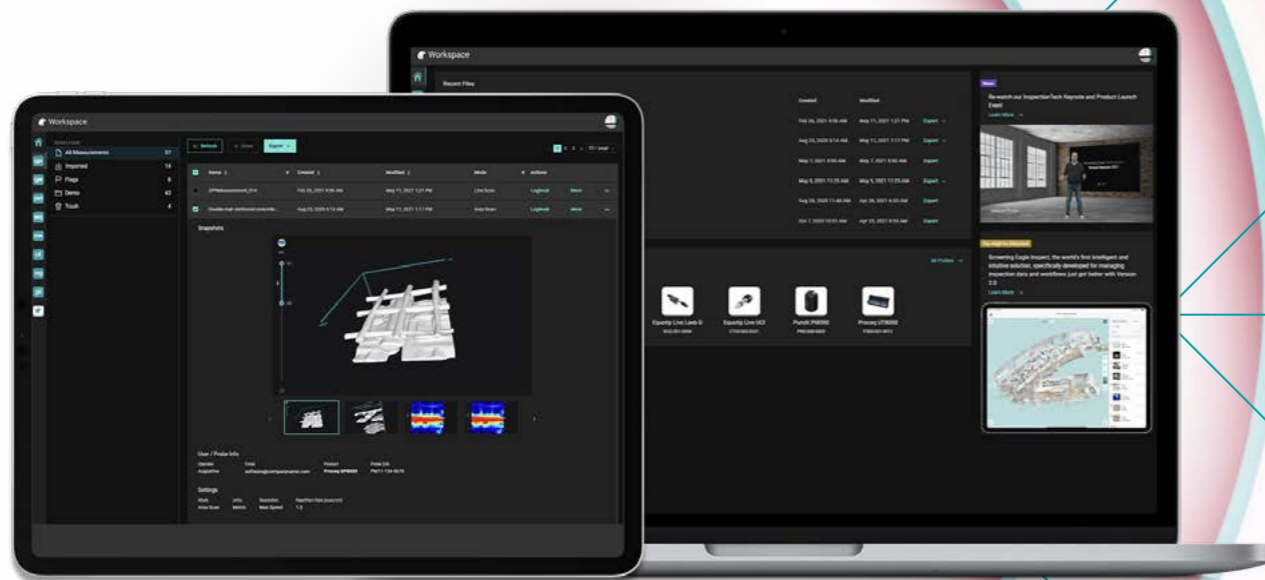


Key features

- Web access from anywhere and any browser
- Automated workflow at project creation
- Data sharing & collaboration
- Cloud storage of projects



Workspace



Easily access, manage and share your data from any web browser.



Collect & auto-sync data onsite

- Your data is automatically synced from your Proceq sensors to Workspace.
- Data can also be viewed in real-time by colleagues and stakeholders offsite.



Analyze data in detail

- Access GPR Insights online via Workspace and visualize your data in different ways with 2D, 3D snapshot, raw, and statistical views.
- Create stunning deliverables for clients and generate the raw files for post-processing.



Share, manage & archive data

- Organize your data easily and collaborate in one click.
- Share data as DOCX, CSV, HTML, JSON, DXF, or SEG Y with anyone on or off Workspace.
- Data is stored securely and can be accessed safely via a URL link.



Generate fast reports

- Workspace enables rapid reporting with all views downloadable including 3D graphics and AR overlays.
- Generate reports in a few clicks, including all measurement info such as snapshots, markers and tags, and logbook pictures.



Save time & costs

- Cut down on unbillable back office hours with centralized data, easy search tools, and organized files.
- Eliminate data silos and report bottlenecks with seamless data sharing - no storage devices needed.



Applications

GPR

Object and utility location

Prevent damage before cutting, drilling or coring concrete, and locate objects such as rebar, PT ducts, utility pipes, power conduits and live wires with ease.



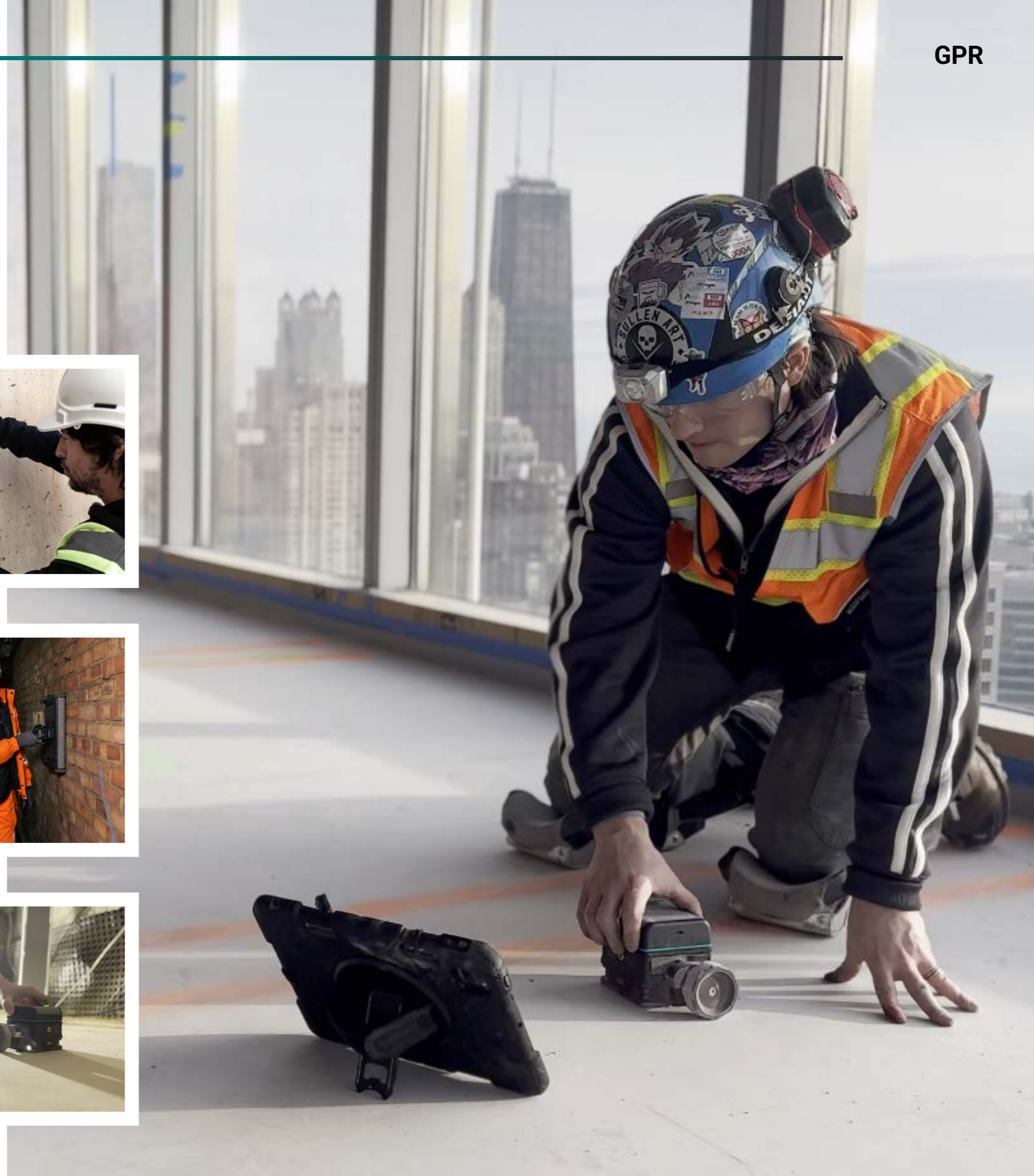
Structural assessment

Deliver fast and efficient inspection of bridges, buildings, tunnels, pavements, and other critical infrastructure above and below ground.



Concrete quality inspections

Detect cracks, voids and cavities in new and existing concrete structures with high precision non-destructive testing.

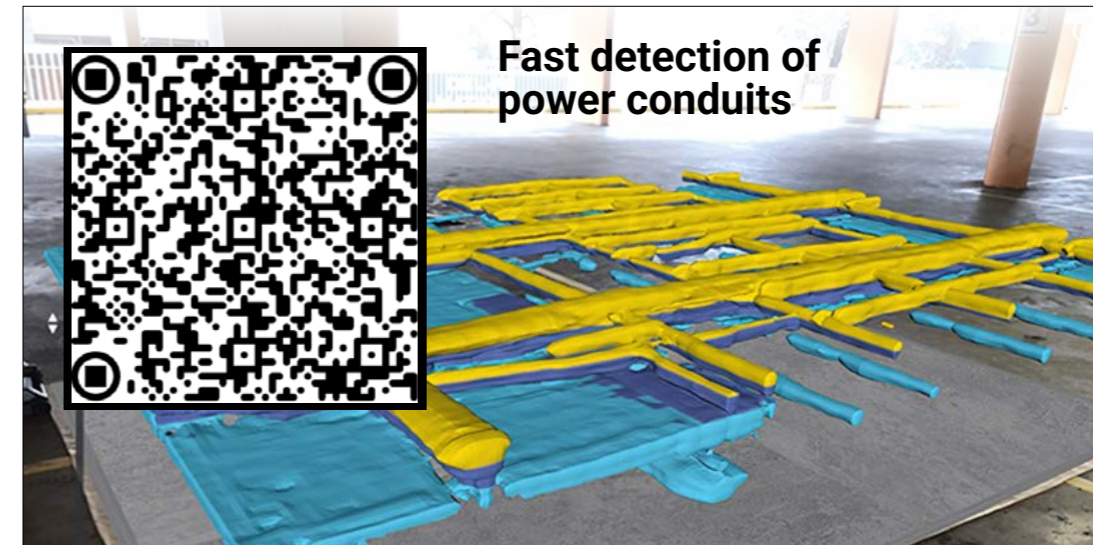




Applications

CASE STUDIES

Click on image or read QR code





Company

Screening Eagle Technologies is a connected ecosystem of sensors and software for intelligent inspection of the built environment.

Proceq, a world-leading manufacturer of non-destructive testing technologies since 1954, is a core brand of Screening Eagle Technologies. Our mission is to protect the built world and enable a society that is safe for all, is of high quality, operates reliably and is truly sustainable. We aim to democratize Built World Data, empower service professionals with easy-to-operate technology, and allow asset owners to make data-driven investment decisions. Together, we contribute to a society that gives back more to nature than it consumes, creating a built world for future generations to enjoy and thrive within.



HEADQUARTERS

Screening Eagle Technologies AG
Ringstrasse 2
8603 Schwerzenbach - Zurich
Switzerland
Headquarters: +41 43 355 38 00
Sales Europe: +41 43 588 34 92
Support Europe: +41 43 508 17 02

EMEA

Proceq AG
Part of Screening Eagle
Ringstrasse 2
8603 Schwerzenbach – Zurich
Switzerland
Sales Europe: +41 43 588 34 92
Support Europe: +41 43 508 17 02

Screening Eagle UK Limited
Bedford i-lab
Stannard Way
Priory Business Park
Bedford
MK44 3RZ
United Kingdom
T +44 1234 923816

Proceq Middle East and Africa
Part of Screening Eagle
Sharjah Airport International
Free Zone, P.O.Box: 8365
United Arab Emirates
T +971 6 557 8505

APAC

Screening Eagle Singapore Pte. Ltd.
1 Fusionopolis Way
Connexis South Tower #20-03
138632 Singapore
Singapore
T +65 6331 4151

Proceq Trading Shanghai Co. Ltd.
Part of Screening Eagle
Room 3A, No. 315
Guangyuan West Road, Xuhui District
200032 Shanghai
China
T +86 21 6317 7479
M +86 152 2162 8766

AMER

Screening Eagle USA, Inc.
117 Corporation Drive
Aliquippa, PA 15001
United States
T +1 724 512 0330

